

AR-LA CDN



Lower Mississippi Valley
JOINT VENTURE

Building Partnership & Successful RCPP Proposal
Finding Opportunity through Partners

CDN Elements = RCPP



Lower Mississippi Valley
JOINT VENTURE

Key Elements to Build the RCPP Proposal

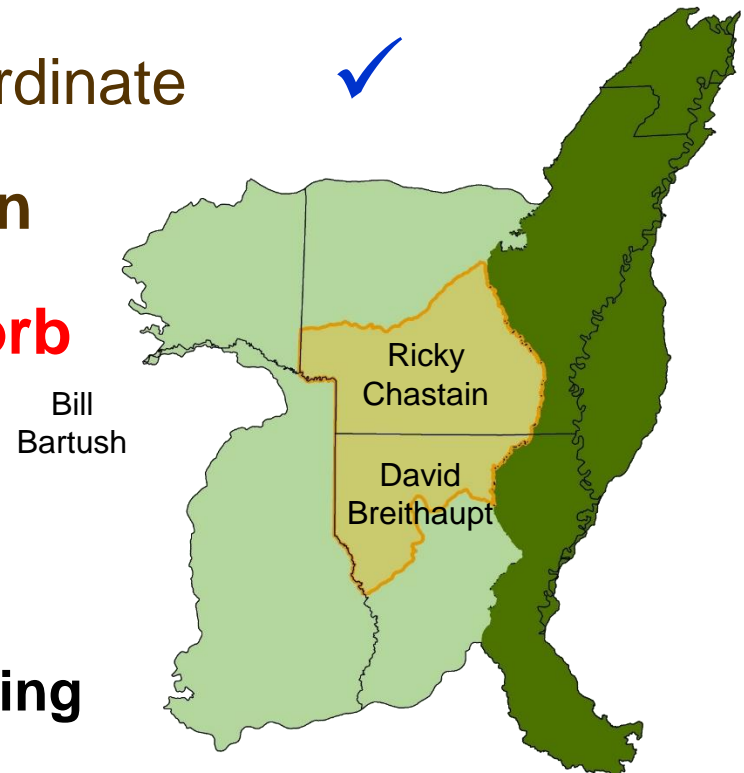
1. Partner Leadership ✓
2. Dedicated JV Office Staff to coordinate ✓

3. Composition – Communication

4. Focus of Open Pine – grass/forb

5. Patch size & Connectivity

1. Forests & ROW
2. Used **Opportunity** to focus funding



AR-LA CDN Background

- *CDN Concept Formed 2012-13*
- *AR-LA CDN Charter drafted 2014*
 - *Steering Committee 2014*
 - *Delivery Team - Private land **Open Pine***
- *2016-17 **QF** Stewardship, Fire, & Morehouse FFI*
- *Re-Engaged CDN 2018 - 2020 meeting*
- **CDN 2020 - Move Ahead w/RCPP**
 - **Get *as Much Money* as Possible**

2020 – Established Baseline

Morehouse Family Forest Initiative

- ***MFFI Farm Bill Opportunities***
 - ***Which Counties, What capability?***
- *AGFC Private Lands Biologists*
- *NWTF Forestry Positions*
- ***QF Farm Bill Biologist Positions***

RCPP Challenge = NRCS Help

- *Step #1 Defining our Habitat (Jan-Mar)*
- *Step #2 Defining Project “Region” (Mar-July)*
 - *16 important counties & parishes*
- *Step #3 Finding Match Contributions (Aug-Nov)*
 - *Federal Contribution Epiphany*
 - *Corporate Partnerships*

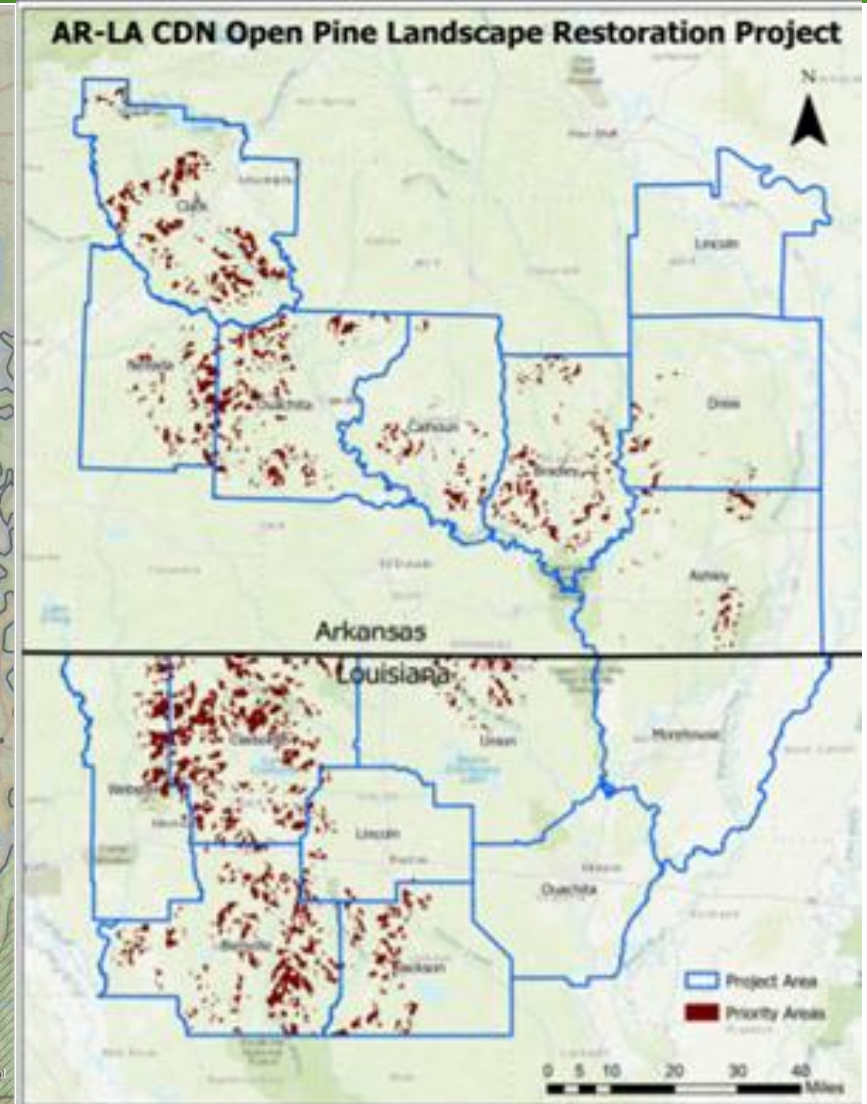
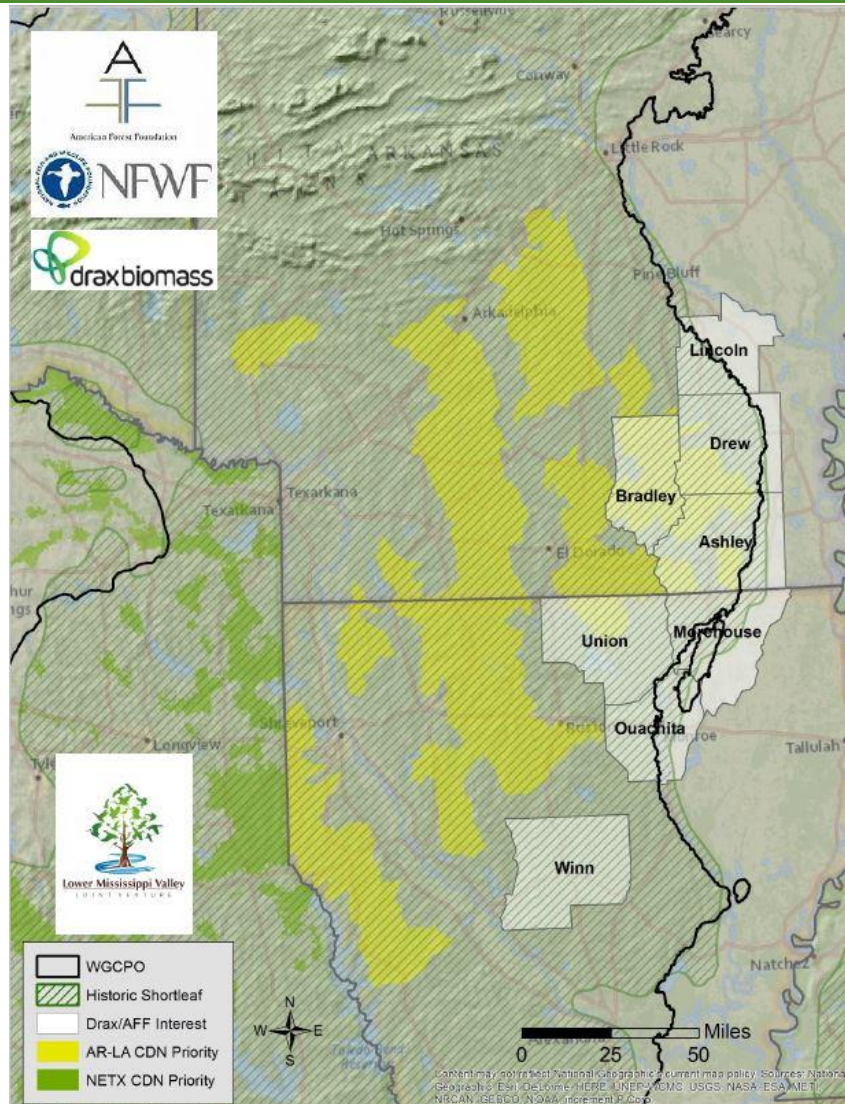
AR-LA CDN – Shared Vision



Lower Mississippi Valley
JOINT VENTURE

- (1) Defining our RCPP Region**
- (2) Finding Match “Contribution”**

MFFI & RCPP Priority Map – Steps (1) Habitat & (2) Priority Area

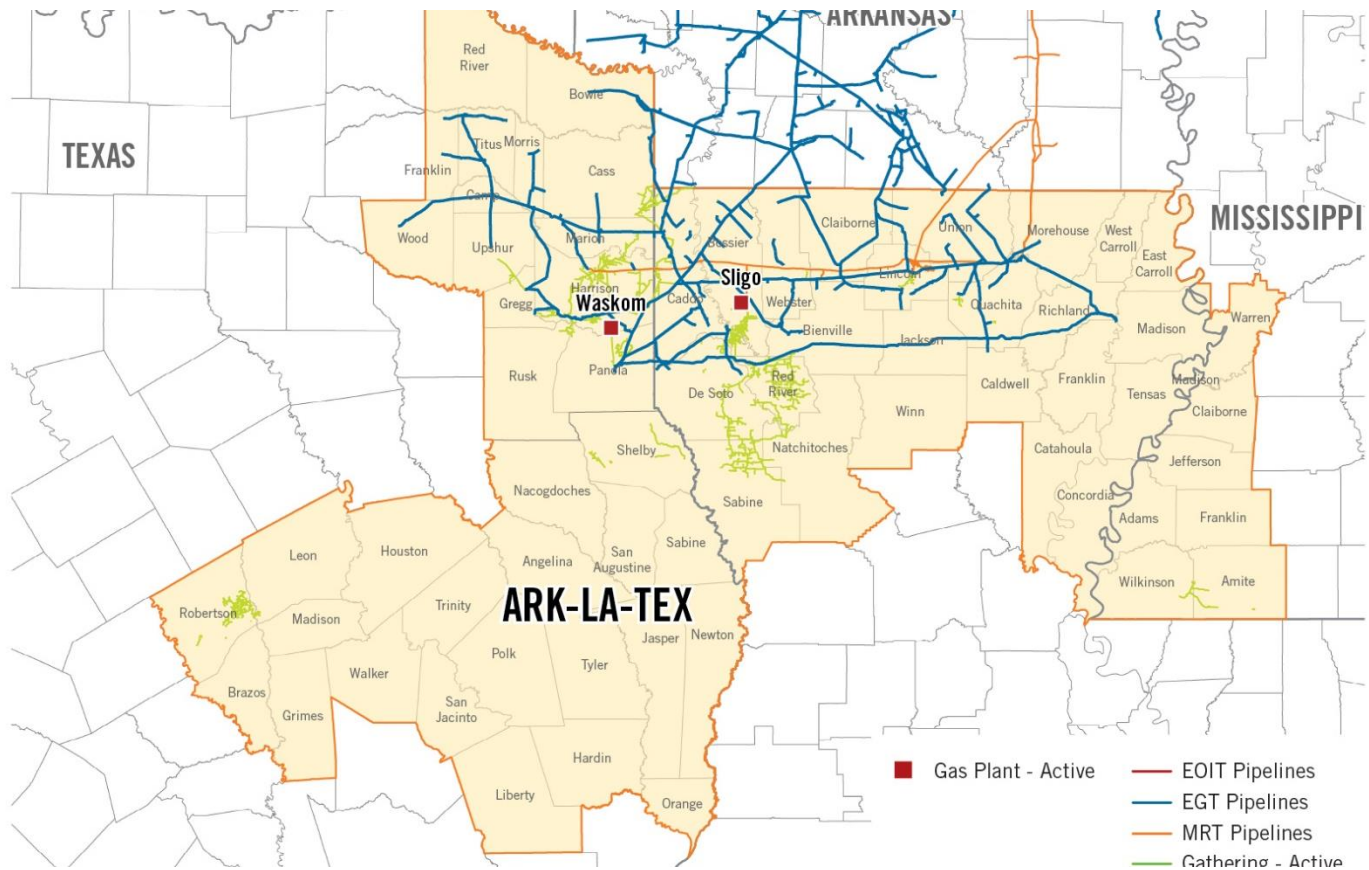


The RCPP Challenge – \$9 Mil

- *Step #1 Defining our Habitat*
- *Step #2 Defining Project “Region”*
 - *16 important counties & parishes*
- **Step #3 Finding Match Contributions**
 - **Federal Contribution Epiphany**
 - **Corporate Partnerships**
 - ✓ *Forest & Energy Industry*

The RCPP Challenge Step #3

- ***Federal Contribution Epiphany***
 - ✓ *DOI & COE, **State Fed Aid opportunity***
 - ✓ *Established Practices & Rates*
- ***Corporate Partnerships - NWTF***
 - ✓ *Potlatch Deltic, Ross Foundation*
 - ✓ *EnableMidstream, Entergy & Elec Coops*
 - ✓ *ID corridors in Region, IVM Miles/Acres*



Enable Midstream Corridors connecting Forests

Defining corridors within region, calculating miles/acres impacted - In-Kind cost per acre could be determined. **These contributions helped turn-the-corner!**

Proposal Writing & Submission

- *LMVJV engaged ABC to Lead Portal Entry*
 - *Portal requires eAuthentication*
 - *TSP skills & “experience”*
- *ABC success in previous RCPP efforts*
 - *Mentor-Skilled support VERY valuable*
 - *Great Lakes, Appalachians OPJV & CHJV*

Questions/Comments?

Prescribed burning Herbicide TSI Reforestation

