



TRI-STATE CONSERVATION PARTNERSHIP



JV Fall Management
Board Meeting
Oct 18, 2019

TCP Update



| 2019 Tri-State Partnership Planning (2/22/19) | | | | | |
|---|---|--|---|-------------|---------------------|
| | OBJECTIVE | Status / Target to Initiate | ACTIONS | LEAD | Additional Comments |
| WRE Outreach | How WRE Works Brochure | Spring | Completing current edits; will share next draft with ASC's for review and comment | Keenan | |
| | | | Revisit status of brochure and identify potential actions | Seiss/Brock | |
| | NRCS Easement Holder Newsletter | Fall | MS will do annually, in-house; AR/LA have interest, will review and consider; revisit at next meeting | Seiss/Brock | |
| | Additional New Enrollment Outreach | July | LA - evaluating county caps and other targeted areas for Aug. 15th mailout | Seiss/Brock | |
| | | July | MS - direct mailing for Oct. landowner (WRE applicant) workshops, mailout mid Aug. | Seiss/Brock | |
| | WRE Management I/E | Mar/Apr | Work with newly formed subcommittee to populate detailed outreach product outline | Seiss/Brock | |
| Jun/Jul | | Working Group to begin developing video and other relevant outreach products | Seiss/Brock | | |
| WRE Forest Management | WRP/E Data Consolidation & Assessment | May | Formulate sub-committee to develop TCP list of WRE forest data needs | Seiss/Brock | |
| | | Fall | Revisit status and discuss as various state efforts evolve | Seiss/Brock | |
| | Landowner Version of Plantation Management Document | March | Working Group will complete proposed final draft and submit to ASC's for final review | Brock | |
| | | April | Publish and distribute final draft | Seiss/Brock | |
| | Markets | Apr/May | Outreach WG will include this as topic to outline product needs/opportunities | Seiss/Brock | |
| | | Spring | Coordinate with partners on hosting field tour for Mills/Suppliers | | |
| SWA Management | WRP Shallow Water Area and Hydrology Projects | Ongoing | Test the SWA Management and Hydrology Enhancement Evaluation Tool | LDWF | |
| Funding | Evaluate LMRV Funding Opportunities and Develop Proposals | Ongoing | Stay on top of potential WREP funding and initiate early planning | Seiss/Brock | |
| | | Ongoing | Continue collaborating with NRCS and other key partners on development of WRE water quality project | Seiss/Brock | |
| | | Ongoing | Evaluate additional funding opportunities as they develop; collaborate & coordinate proposal development as appropriate | Seiss/Brock | |
| Governance | Declaration of Partnership | Fall | Review and update DoP for potential signing at 2020 WFF meeting. | Seiss/Brock | |

Current Activities/Focus:

- WRE Outreach WG
- WRE Forest Mgmt WG
- Funding & Project Development



WRE Outreach Working Groups



WRE Videos

- Topics Selected:
 - 1) New Enrollment
 - 2) Forest Management
 - 3) Wetland Management
- ~Ten 5 Min Videos
- Annotated Outlines
- Vendor Selected
- November Coordination Meeting
- Begin Production in Early 2020



MS NRCS ACEP Workshops

- Utilized Landowner Parcel Database
- Invitations to 1,119 Landowners
- Special thanks to DU's Mike Mitchell

2019 Registration NOW OPEN for NRCS Agricultural Conservation Easement Program (ACEP) Workshops

WHEN ARE THE WORKSHOPS?

- September 26, 2019** – Indianola – 11am-2pm – The Capps Center, 920 US Hwy 82, Indianola, MS 38751
October 3, 2019 – Marks – 11am-2pm – USDA Conference Room, 302 Martin Luther King Drive, Marks, MS 38646
October 4, 2019 – Jackson – 12 pm-2:30pm - Mississippi Farm Bureau Federation, 6311 Ridgewood Road, Jackson, MS 39211

WHAT WILL I LEARN?

* Details of ALE and WRE * The application process * Required documentation * What a restored easement will look like * Ranking of offers * How to make the best WRE offer.

You should strongly encourage anyone interested in ACEP to attend one of these meetings, *they will be glad they did!*

HOW DO I REGISTER?

Any interested landowners in Mississippi are welcome to attend. Lunch will be served at each of these meetings. Anyone planning to attend must *register online* at www.lowerdelta.org/workshops/ or by calling the Lower Delta Partnership at 662-873-6261.

ACEP CONSISTS OF TWO COMPONENTS

Agricultural Land Easements (ALE) assist conservation organizations to protect productive working lands by preventing non-agricultural uses and maximize protection of land devoted to food production (such as land shown at right).



Wetland Reserve Easements (WRE) restore, protect, and enhance enrolled wetlands and improve wildlife habitat. Eligible WRE lands include farmed or prior-converted wetlands that can be successfully and cost-effectively restored (such as land shown at left).

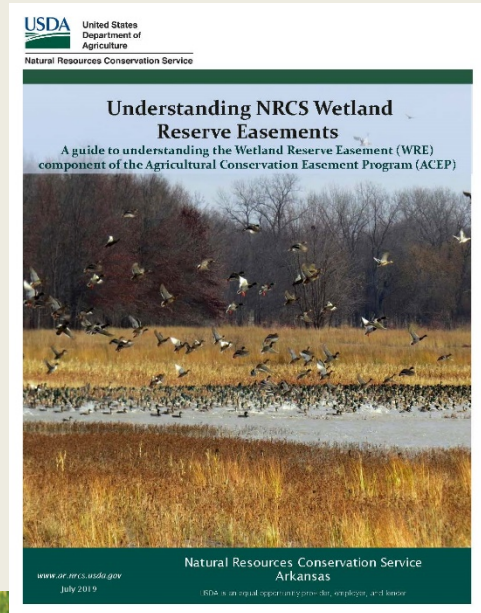


WRE Outreach Working Groups



Other WRE Outreach Projects

- Understanding WRE Brochure (pg 55)
 - 8 Pg, Comprehensive for Landowners
 - 3500 to 6000 Copies/State
 - Available on JV Website:
LMVJV.Org/Delivery/TCP
- Updating & Redesign TCP Flyer
Also Available LMVJV.Org/Delivery/TCP

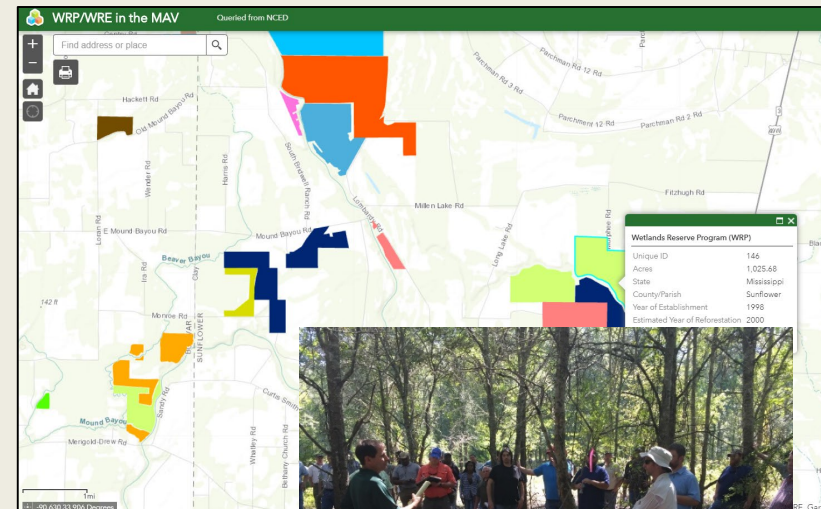
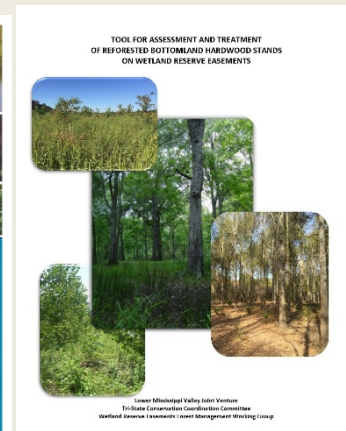


WRE Forest Management Working Groups



Publications

- Completion of Pltn Mgmt Landowner Easement Guide
 - Pg 49
 - Printed and Electronic Versions
 - 2500 Copies/State
 - Available LMVV.Org/Delivery
- Redesign of Plantation Mgmt. Tool
- 2020 Forest Markets Workshop – MS
- WRP/E Plantation Age Estimation Tool
- Forest Stewards Guild - NFWF Grant
 - Learning Exchange Workshop – Nov
 - 3 DFCW Workshops Planned 2020



Funding & Project Development



2019 WREP Funding

- Tri-state Conservation Estate Expansion
 - \$10M Awarded
 - Match: \$670K WFF & \$150K Arbor Day Foundation
- Ongoing MRT Batture WREP - \$19M Awarded

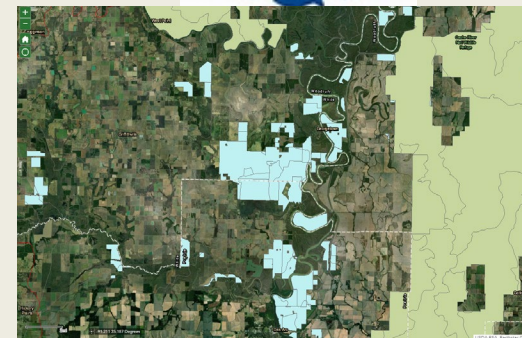
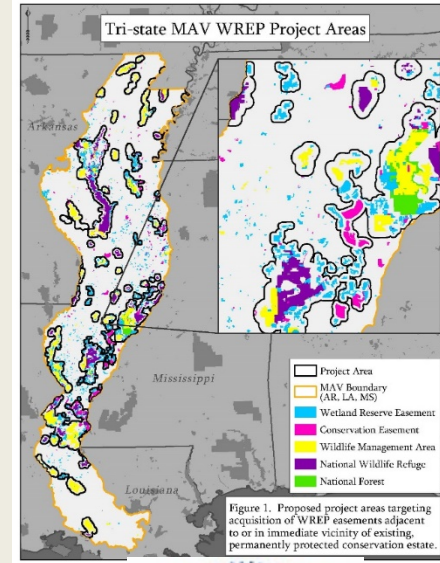
Have Surpassed \$100M in Funding in MAV since 2013

NFWF – Supporting Planning

- Developing Five Year Business Model for LMAV
- TCP Partners Providing Significant Input/Support

RCPP Project Planning

- AR & LA Linking Working Lands to Wetlands
- Dec 3 Application Deadline



Funding & Project Development



RCPP

**Regional Conservation
Partnership Program**

Questions?



Lower Mississippi Valley
JOINT VENTURE

