

# MANAGING BOTTOMLAND HARDWOODS ON WETLAND RESERVE EASEMENTS IN THE LOWER MISSISSIPPI ALLUVIAL VALLEY



GILES KELLY

BOTTOMLAND HARDWOOD FORESTER





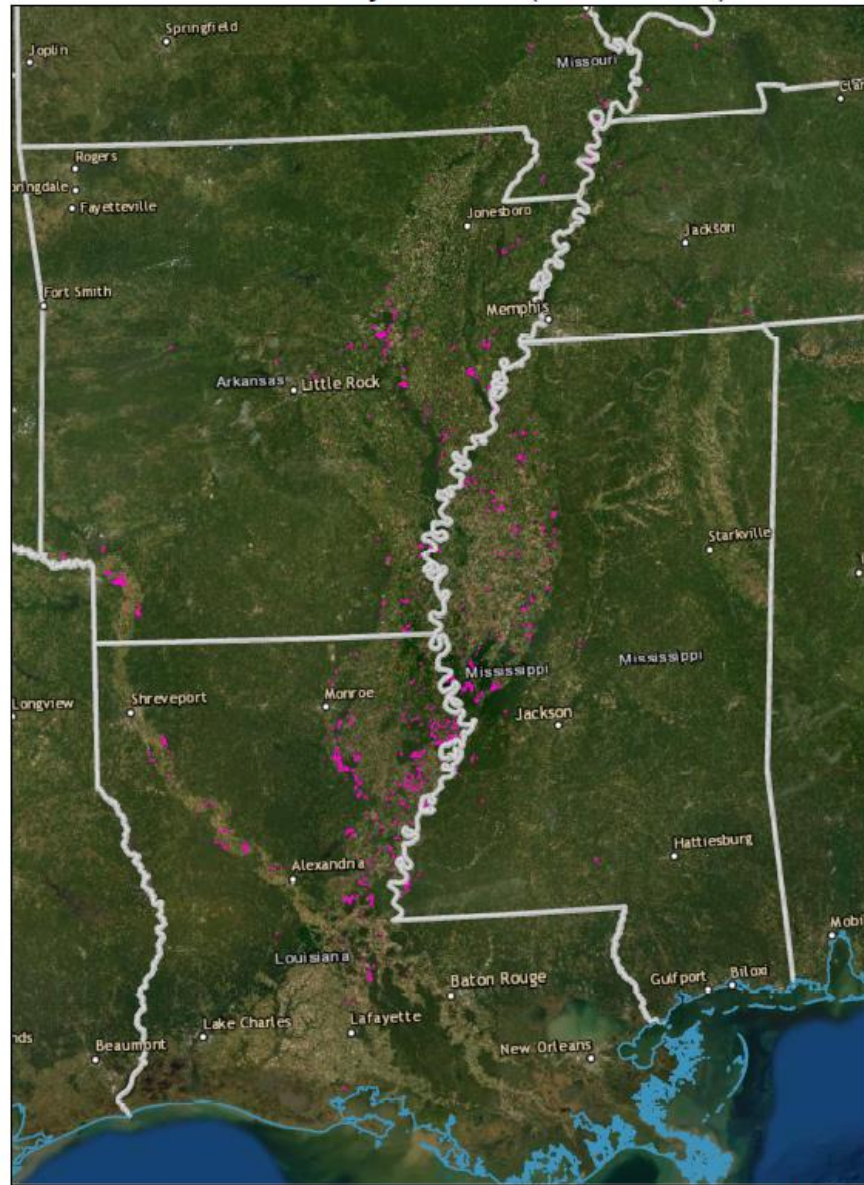
# Introduction

🌳 ~256,000 acres of forested Wetland Reserve Easements (WRE) in the LMAV project area (1992-2000).

🌳 Arkansas, Kentucky, Louisiana, Mississippi, Missouri, and Tennessee.



# WREs in Project Area (1992-2000)



Mississippi  
River  
Trust

Mississippi  
River  
Trust

# WRE Forested Acreage

## Wetland Reserve Easements in the LMAV (1992-2000)

	Mississippi	Louisiana	Arkansas	Tennessee	Missouri	Kentucky	Grand Totals
<b>Total Acreage</b>	83,965	130,681	89,181	11,335	2,657	2,387	320,206
<b>Forested Acreage</b>	67,172	104,545	71,345	9,068	2,125	1,910	256,165

\*Forested acreage represents 80% of the total acreage enrolled.

\*In Louisiana, the total acreage value includes stands of mature timber within the easement.

# Silviaterra Inventory

🌳 Private company of foresters, biometricians, & programmers.

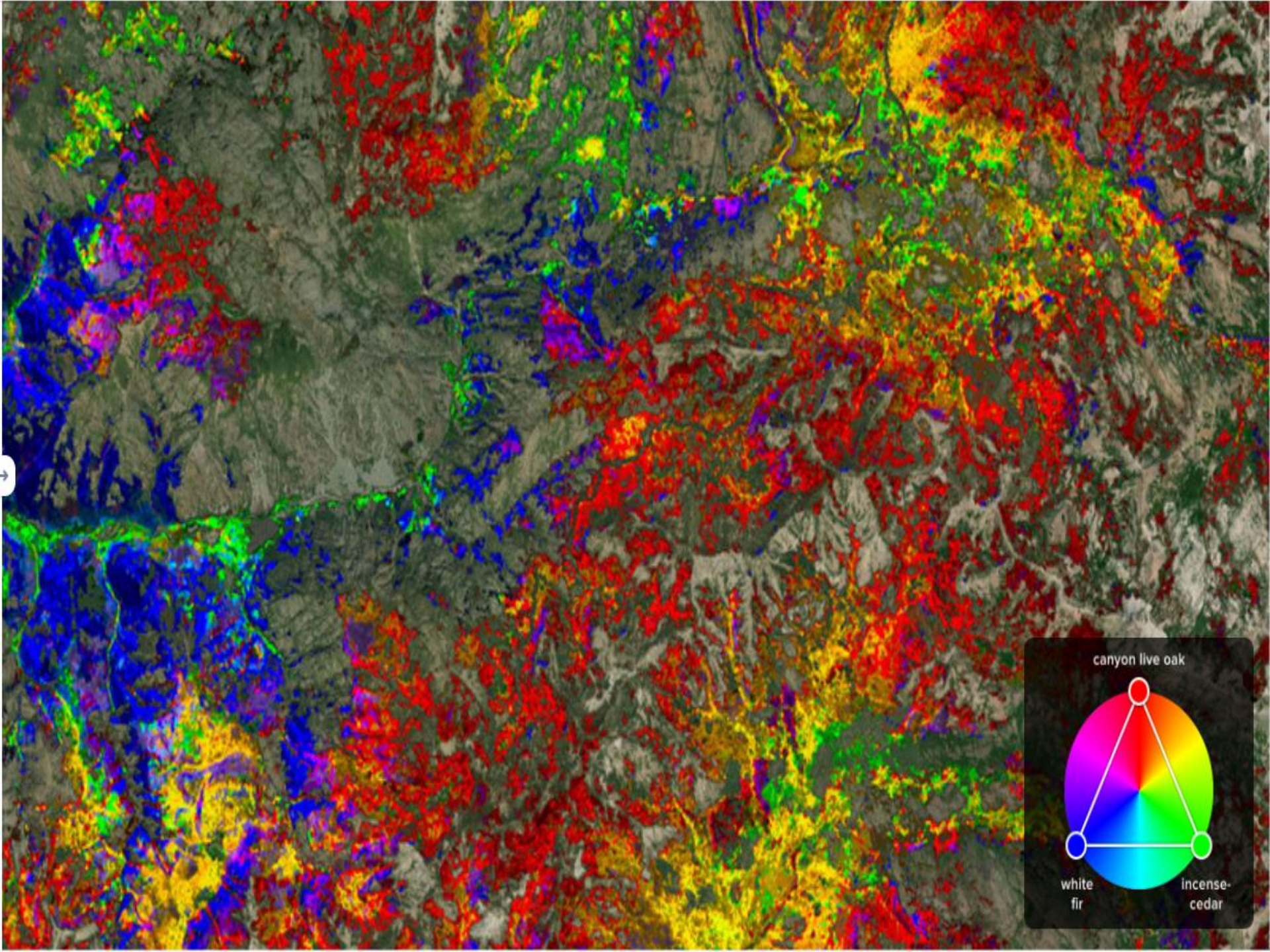
🌳 LiDAR based forest inventory (Basemap).

🌳 Highly customizable reports.

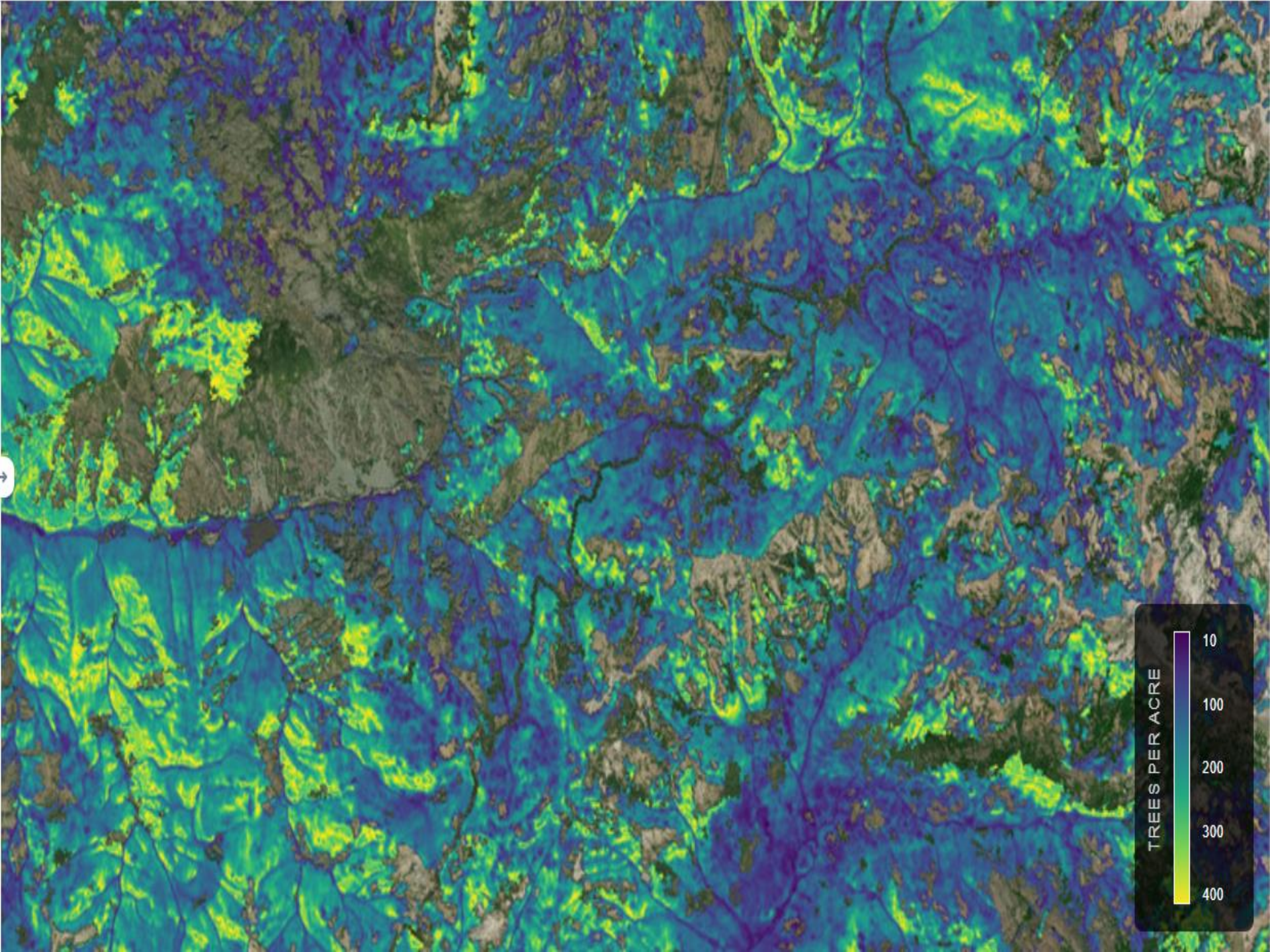
🌳 <https://www.silviaterra.com/>











# Forest Certification

 **Forest Stewardship Council (FSC).**

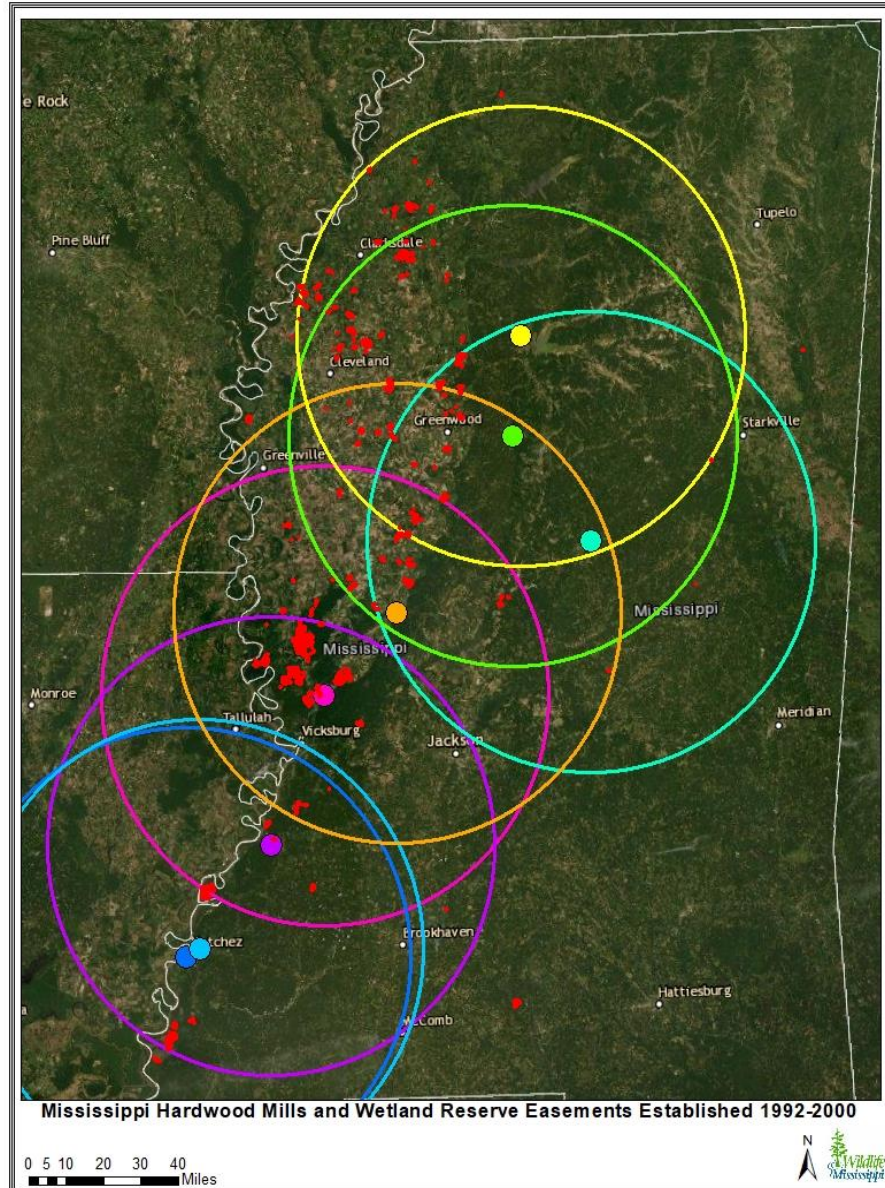
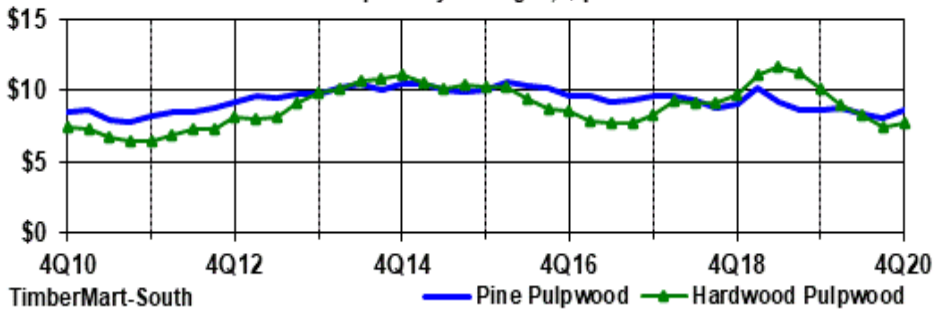
 **Marketability.**

 **Alignment of goals.**



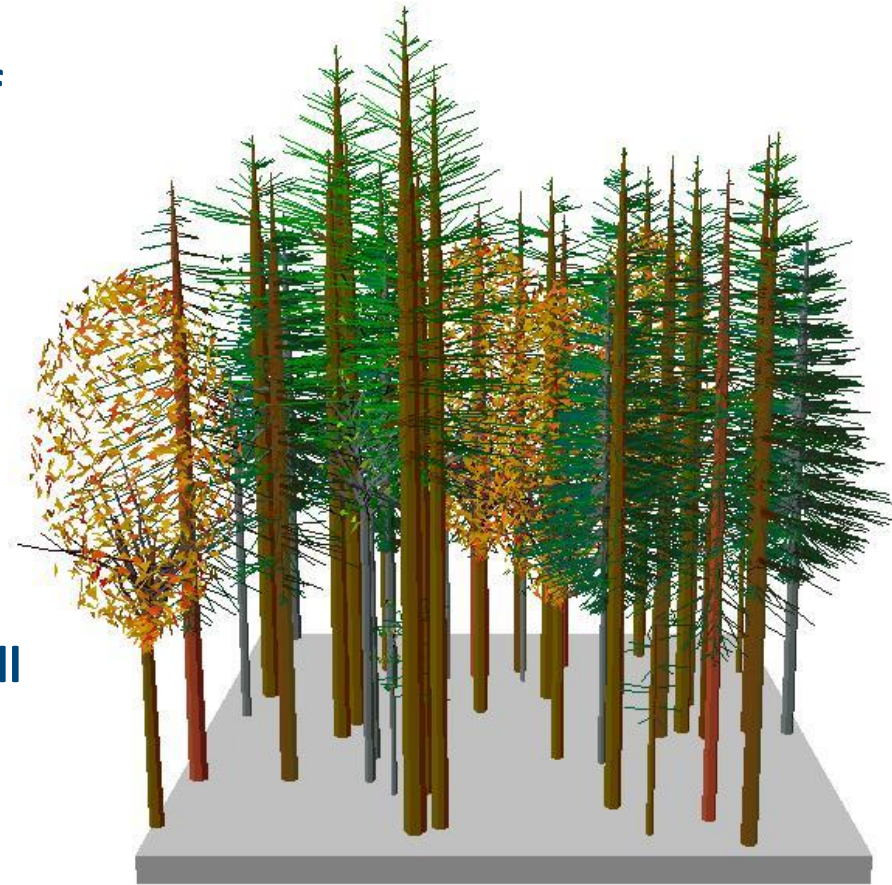
# Markets and Logging

South-wide Pulpwood Stumpage Prices  
quarterly averages, \$ per ton



# Natural Resource Spatial Informatics Group (NRSIG)

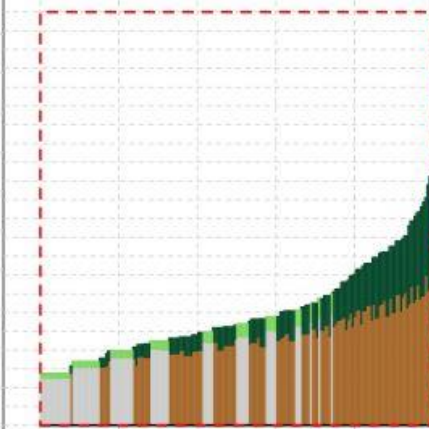
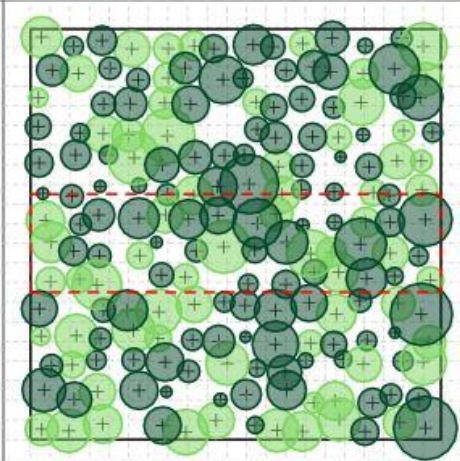
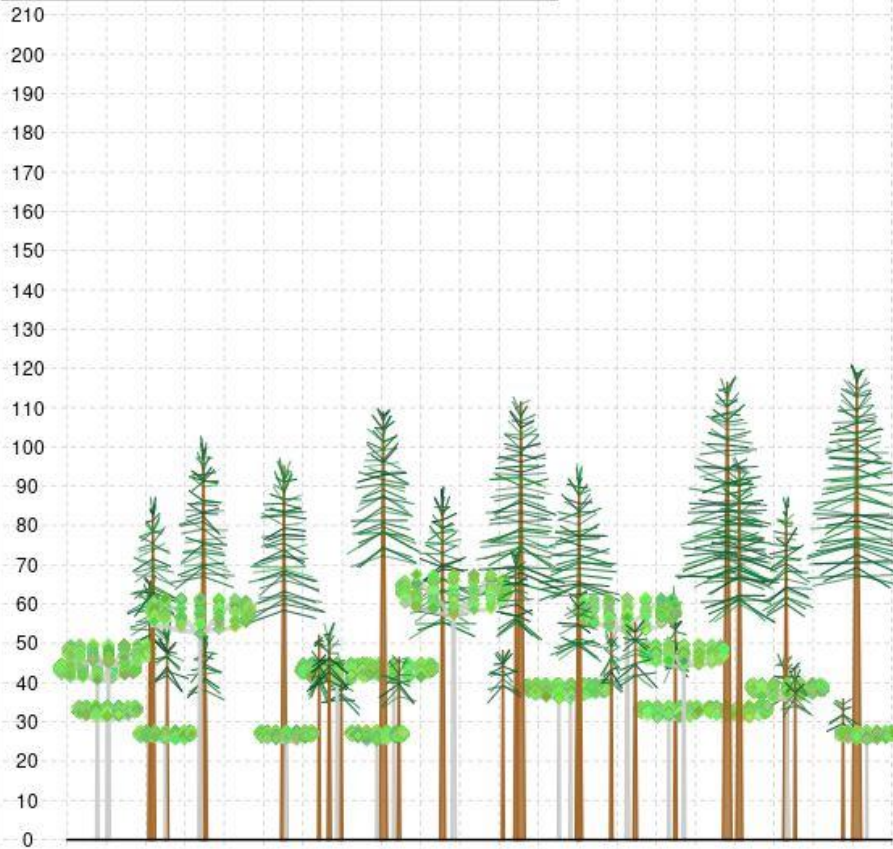
- 🌳 Research group within the Precision Forestry Cooperative at the University of Washington.
- 🌳 Forest Ecosystem Management System (FEMS).
- 🌳 Will aid with forest management, planning, policy making, and education.
- 🌳 Data collected in Silviaterra inventory will be directly compatible with the FEMS.
- 🌳 Users can simulate the growth of stands and landscapes to view the outcomes using a “point-and-click” system.



# Forest Ecosystem Management System

## Stand Visualization

Species: DF DBH: 27 Ht: 116.4 LCR: 0.41 MCW: 26.6



Done



TOOL FOR  
**ASSESSMENT  
AND TREATMENT**  
OF REFORESTED BOTTOMLAND  
**HARDWOOD**  
STANDS ON  
**WETLAND**  
RESERVE EASEMENTS

# Plantations to DFCW



# Questions, Concerns, and Comments

[gkelly@wildlifemiss.org](mailto:gkelly@wildlifemiss.org)

(662) 822-5309

