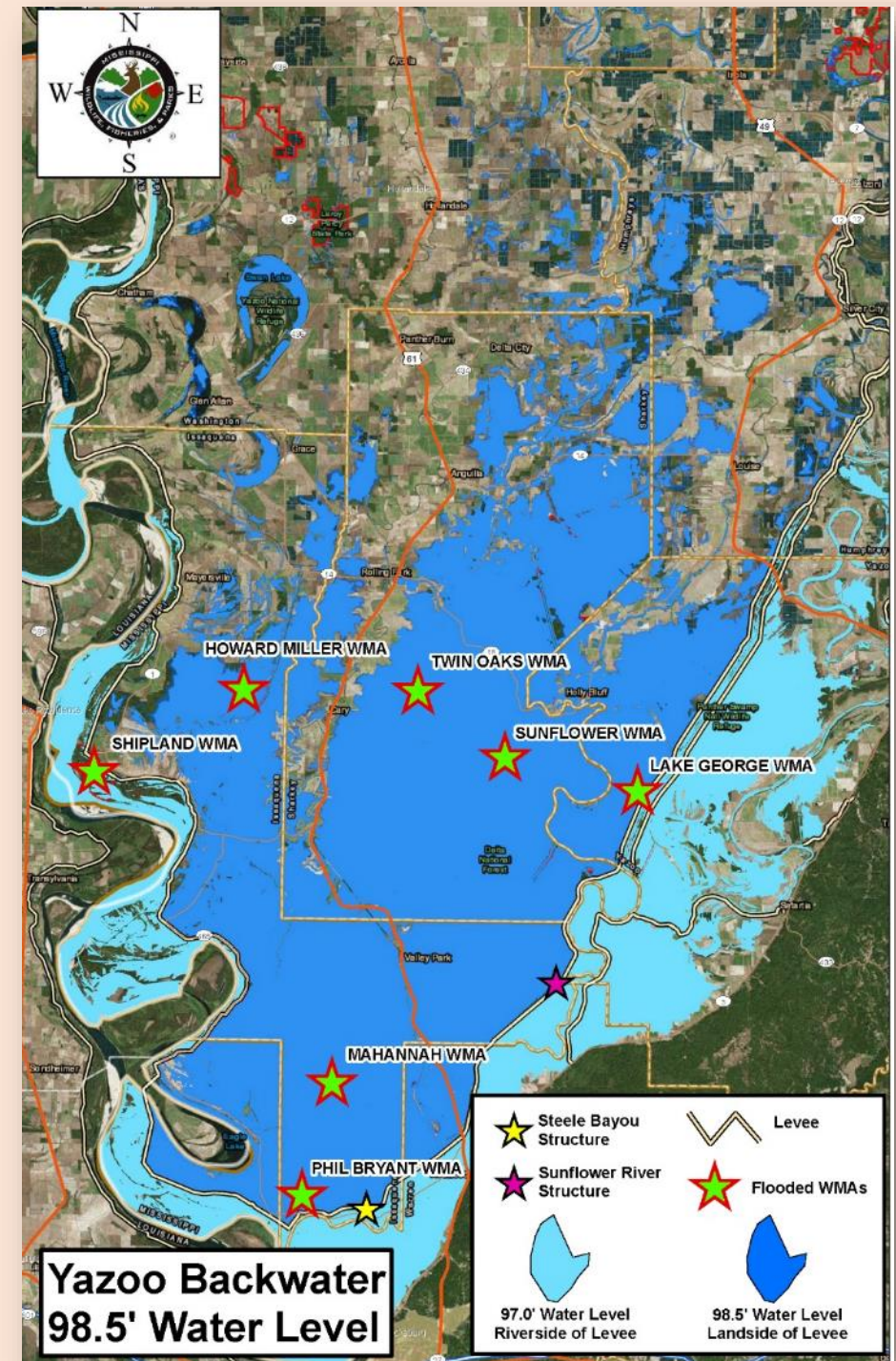


2019 South Delta Flood Response



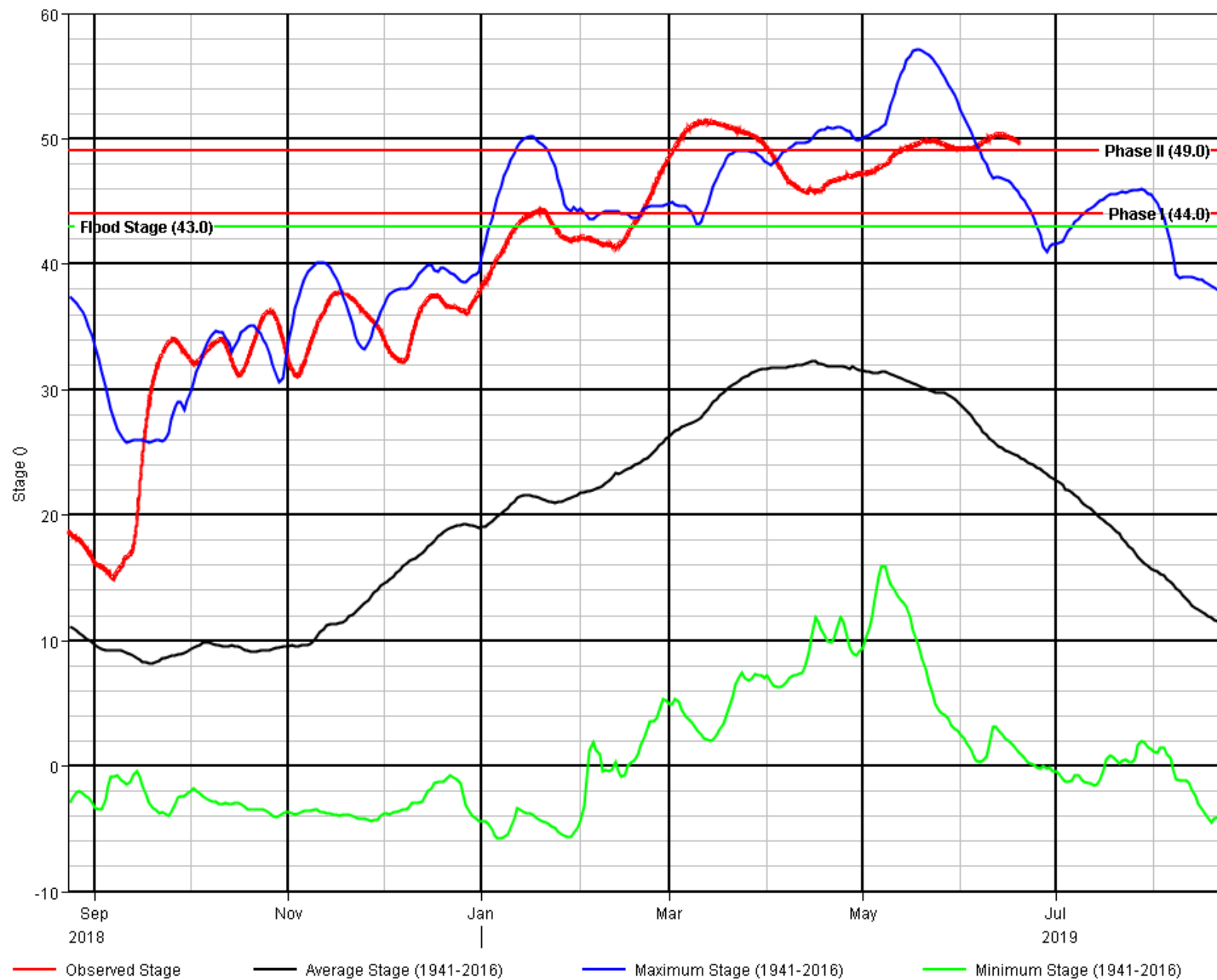
2019 South Delta Flood

- MS River longest above flood stage since 1927 in Vicksburg
- Record flood on Steele Bayou landside
- Approximately 775,000 acres flooded

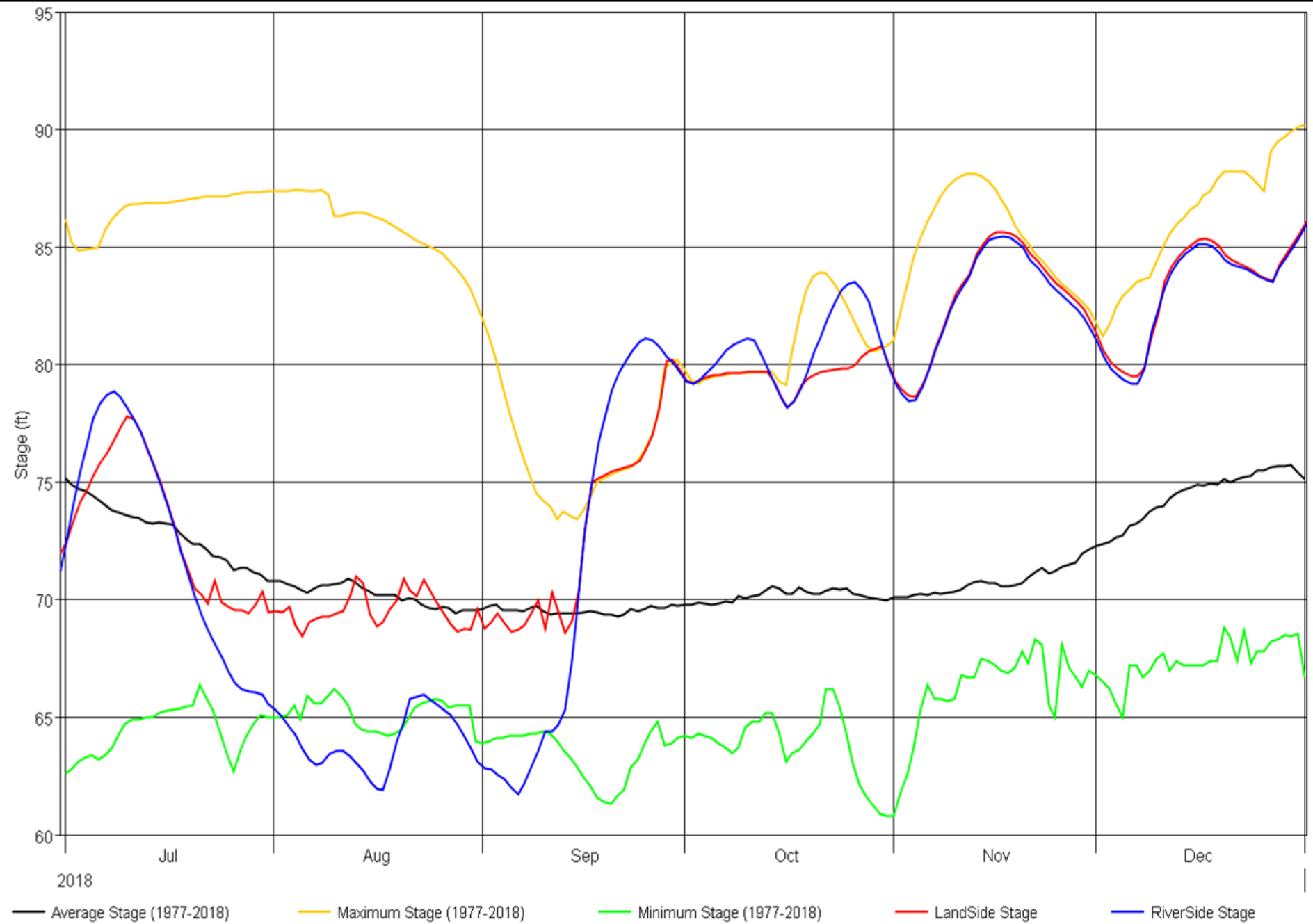


Mississippi River

Vicksburg Gauge



Steele Bayou





**Crop Land
underwater**

**Homes
underwater**

**South of Valley Park, MS
Backwater at 97.2' on March 29, 2019**

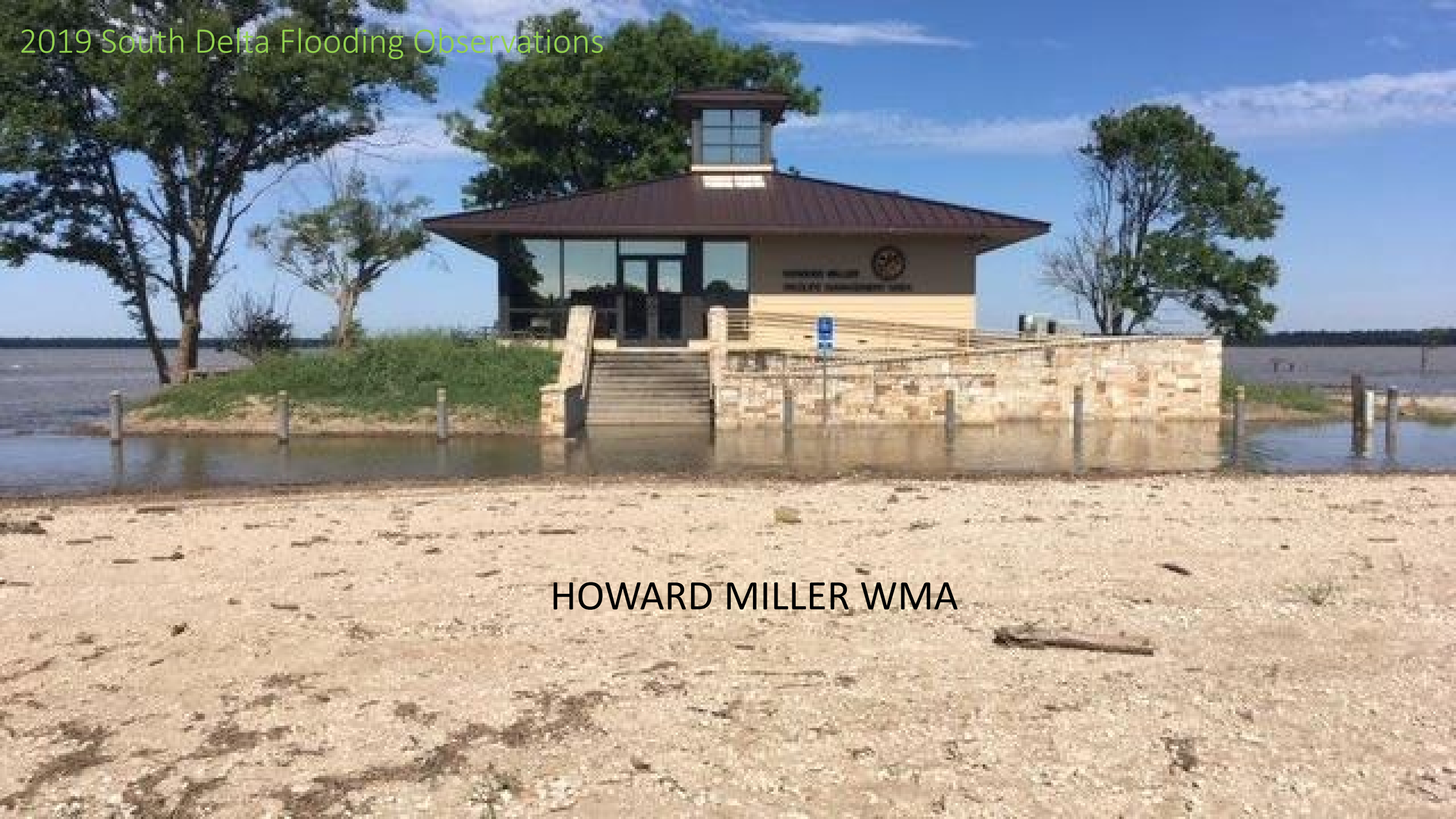
7 Wildlife Management Areas Impacted



MAHANNAH WMA



2019 South Delta Flooding Observations



HOWARD MILLER WMA

SUNFLOWER WMA





















7 YO Buck 7/24/2019



MDWFP Actions

- White-tailed deer surveys
- Telemetry flights
- Bear captures
- Fawn tagging
- Monitored alligator nests
- Supplemental feeding permits
- MDWFP established feed sites
- Reptile mortality documentation
- MSU vet lab necropsies
- Forest surveys













... then the river receded



Post-Flood Wildlife Assessment

- Met with DMAP clubs and public land managers
- Passive camera survey
 - Standardized camera survey across multiple landowners
 - Survey of all wildlife





Questions/Comments