

2020 Registration NOW OPEN for NRCS Agricultural Conservation Easement Program (ACEP) Workshops

WHEN ARE THE WORKSHOPS?

The workshops will be conducted virtually via Zoom on

- **Tuesday, October 6 from 10 am – 12 noon**
- **Thursday, October 8 from 2 pm to 4 pm**

WHAT WILL I LEARN?

- * Details of ALE and WRE
- * The application process
- * Required documentation
- * What a restored easement will look like
- * Ranking of offers
- * How to make the best WRE offer.

You should strongly encourage anyone interested in ACEP to attend one of these meetings, *they will be glad they did!*

HOW DO I REGISTER?

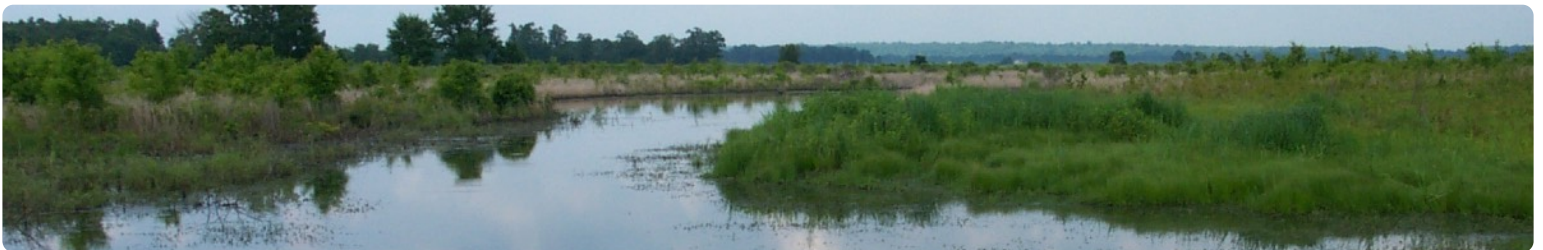
Any interested landowners in Mississippi are welcome to attend. Anyone planning to attend must register online at <https://lowerdelta.org/workshops/>

ACEP CONSISTS OF TWO COMPONENTS

Agricultural Land Easements (ALE) assist conservation organizations to protect productive working lands by preventing non-agricultural uses and maximize protection of land devoted to food production (such as land shown at right).



Wetland Reserve Easements (WRE) restore, protect, and enhance enrolled wetlands and improve wildlife habitat. Eligible WRE lands include farmed or prior-converted wetlands that can be successfully and cost-effectively restored (such as land shown at left).



In accordance with Federal civil rights law and U.S. Department of Agriculture (USDA) civil rights regulations and policies, the USDA, its Agencies, offices, and employees, and institutions participating in or administering USDA programs are prohibited from discriminating based on race, color, national origin, religion, sex, gender identity (including gender expression), sexual orientation, disability, age, marital status, family/parental status, income derived from a public assistance program, political beliefs, or reprisal or retaliation for prior civil rights activity, in any program or activity conducted or funded by USDA (not all bases apply to all programs). Remedies and complaint filing deadlines vary by program or incident. *Persons with disabilities who require alternative means of communication for program information (e.g., Braille, large print, audiotape, American Sign Language, etc.) should contact the responsible Agency or USDA's TARGET Center at (202) 720-2600 (voice and TTY) or contact USDA through the Federal Relay Service at (800) 877-8339. Additionally, program information may be made available in languages other than English. *USDA is an equal opportunity provider, employer, and lender.