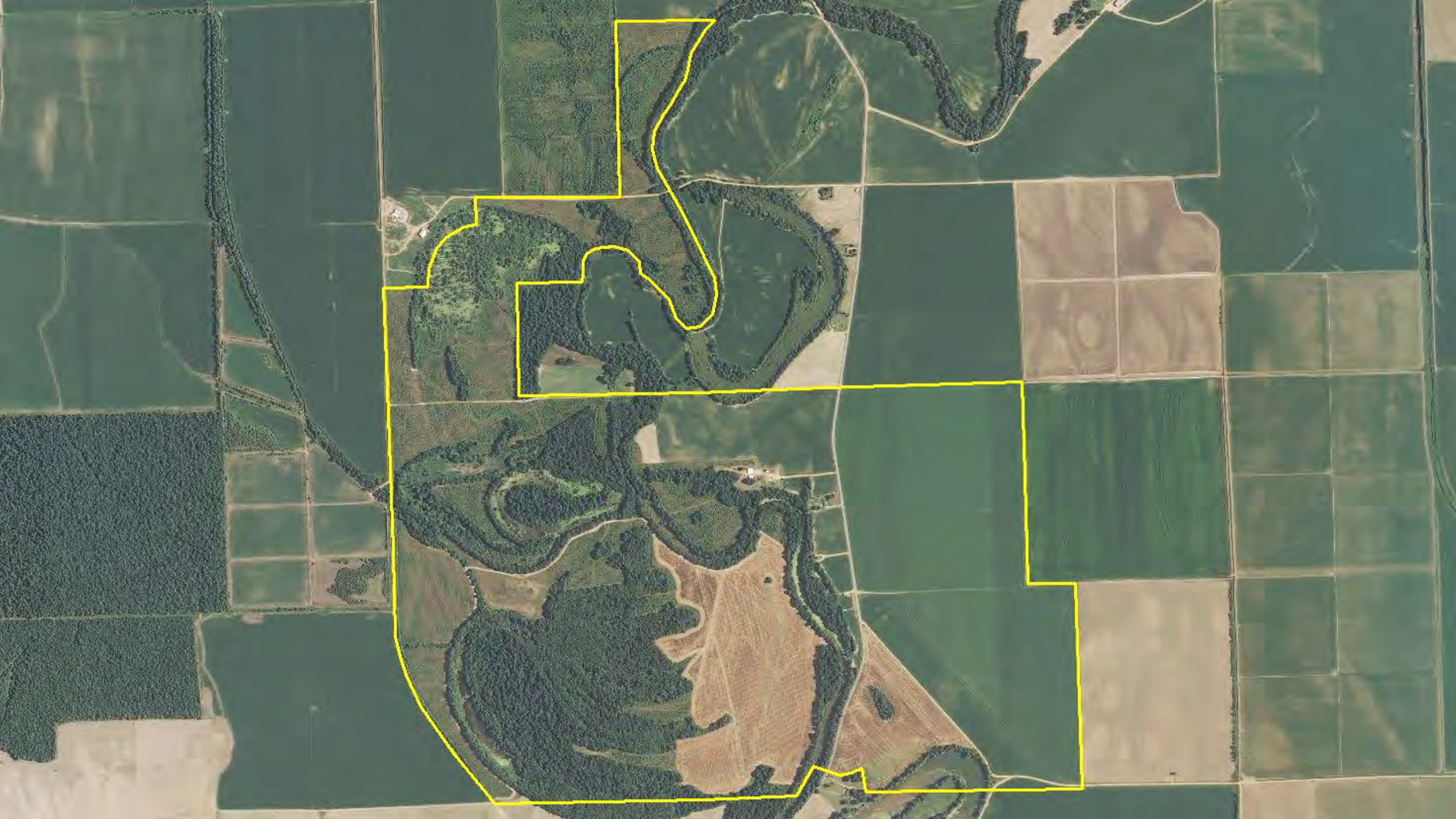




Annual Farm Planning and Decisions

Jon Allison, Tallahatchie County



September

- Harvest / Product Delivery
- First Look at Net Loss / Profit
- Seedbed Prep
- Land Leveling, Field Planning



October

- Continue Harvest
- Seedbed Prep / Fertilizer
- Major Field Changes
- Land Leveling, Soil Sampling



November

- Net Loss / Profit
- Seedbed Prep / Fertilizer
- End of Year Finances
- Soil Sampling, Field Changes



December

- End of Year Finances
- Variety Selection / Booking
- New Year Finances
- New Rent Contracts, Add / Subtract Acres



MISSISSIPPI'S OFFICIAL VARIETY TRIALS



January

- New Year Finances
- Final Crop Plans / Seed & Nitrogen
- Equipment Prep
- New Rent Contracts, Equipment Decisions, Hunt



February

- Equipment Prep
- Crop Insurance Decision
- Burndown
- Equipment Purchase / Auctions, Field Days / Shows



March



- Burndown / Weed Control
- Tillage
- Planting
- Land Leveling, Field Changes

April

- Planting, Weed & Pest Control
- Nitrogen Fertilization
- Tillage
- No Extra Time



May



- Planting, Weed & Pest Control
- Nitrogen Fertilization
- Spray Emerging Weeds
- Disease / Insects, Irrigation Prep, No Extra Time

June

- Post Spray Weeds
- Irrigation
- Finishing Inputs
- Disease / Insect Scouting, No Extra Time



July

- Irrigation
- Harvest Equipment Prep
- Funding to Year End
- Scouting, Field Days, Equipment Purchase, Vacation



August

- Harvest Equipment Prep
- Irrigation
- Harvest
- Ditches, Field Planning



Start Over
Again!

The Cycle
Never Ends

