

MAV CDN Updates

Steve Brock, MAV Partnership Coor
Fall Management Board Mtg
Oct 18, 2019



AR MAV CDN Highlights



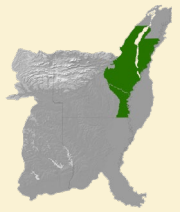
Spring Steering Committee

- Address Chair Transition
 - AGFC's – David Graves
 - DU's – Ethan Massey
- Workshop/Training Priorities
 - DFCW 2020
- Fall Meeting Planning -
 - “Managing Wetland for Waterbirds”





AR MAV CDN Update



Turn-row Credibility Workshop II

- 54 Attendees
- 12 Organizations Represented
- 1 Day Classroom
- 1 Day Field



*Turn-Row Credibility Workshop II
- Irrigation Water Management -*



August 13-14, 2019

*Grateful Acres
2677 Bevis Rd. Lonoke, AR*



AR MAV CDN Update



Turn-row Credibility Workshop II

Objectives:

- Strengthen delivery professionals knowledge & ability to work with farmers/landowners
- Improve delivery of MAV bird habitat delivery goals

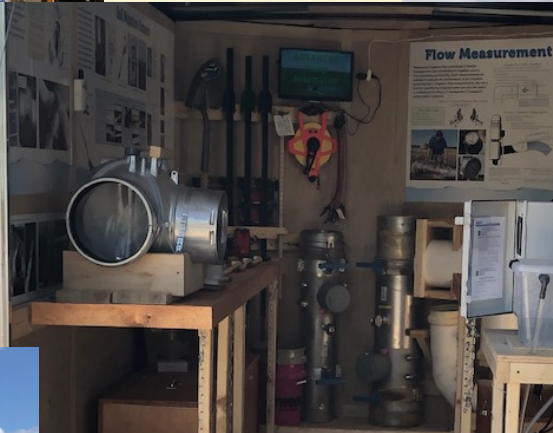
Agenda Highlights:

- Groundwater Decline & AR Water Plan, ANRC
- Irrigation Water Management Primer, NRCS
- Pipe Planner, Delta Plastics
- Utilizing the Discovery Farm Program to Promote Conservation, UofA Coop Ext
- IWM & Conservation Planning, NRCS
- IWM throughout the Year: A Producer's Perspective
- Panel Discussion
- Day Two Field Trip





AR MAV CDN Update





AR MAV CDN Update



Agenda Highlights:

- Partner Spotlight: Audubon
- Updates: NRCS, Working Ag Lands WG & TCP
- Project Spotlight: White Rvr NWR work with DU
- JV Shorebird Plan Highlights
- Habitat Restoration & King Rails on Choctaw Island WMA
- Field Trip





AR MAV CDN Update

Fall Membership Meeting (Oct 2)

Theme: “Managing Wetland for Waterbirds”

Objectives:

Advance partners awareness

1. Of JV Shorebird objectives
2. AGFCs Marshbird focused work
3. Look at and discuss habitat mgmt.
4. Advance delivery professionals knowledge and interest in related management

Agenda Highlights:

- Partner Spotlight: Audubon
- Updates: NRCS, Working Ag Lands WG & TCP
- Project Spotlight: White Rvr NWR work with DU
- JV Shorebird Plan Highlights
- Habitat Restoration & King Rails on Choctaw Island WMA
- Field Trip





AR MAV CDN Update

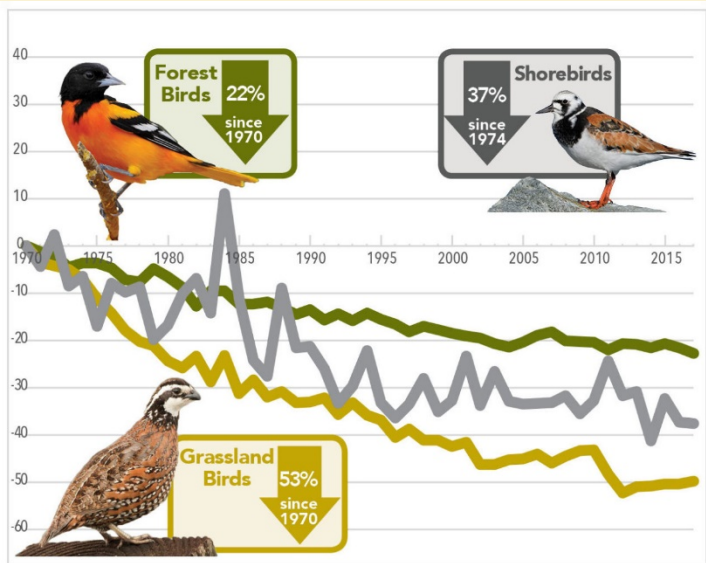
Marsh Bird Habitat Management at Choctaw West WMA

Karen Rowe, Bird Conservation Program Leader
Wildlife Management Division,
Arkansas Game and Fish Commission



LMVJV Shorebird Plan

Mississippi Alluvial Valley and West Gulf Coastal Plain
The Mississippi Alluvial Valley and West Gulf Coastal Plain Bird Conservation Regions serve as a migratory corridor for 28 species of shorebirds and a breeding/wintering location for three additional species. Migratory shorebird populations typically stopover from July through October, with a peak in late August/early September for fall migration, and from April to mid-May with a peak in mid-April for spring migration. During migration, shorebirds occur primarily in shallowly flooded freshwater wetlands. Shorebirds prefer water depths of $0-10\text{cm}$ or mud flats, and areas with less than 25% vegetation cover. Fall habitat (July to October) is the most limiting to shorebirds in the region. We used a bioenergetic model to estimate habitat requirements to support a fall migrating shorebird population. Results of the modeling predicted an average of 5,100ha \pm 940ha (7,853ac \pm 208ac) of shorebird habitat is needed in the fall to support shorebird populations that migrate through the region. Approximately 70-100% of the LMVJV habitat objective could be met on public managed lands based on survey responses. However, providing the necessary mix of water depth and vegetative structure at the appropriate times is the single most important management issue in the region. The LMVJV partnership must continue to promote management for high quality shorebird habitat in the region and evaluate effectiveness of those management actions.



AR MAV CDN UPDATE



What's Ahead:

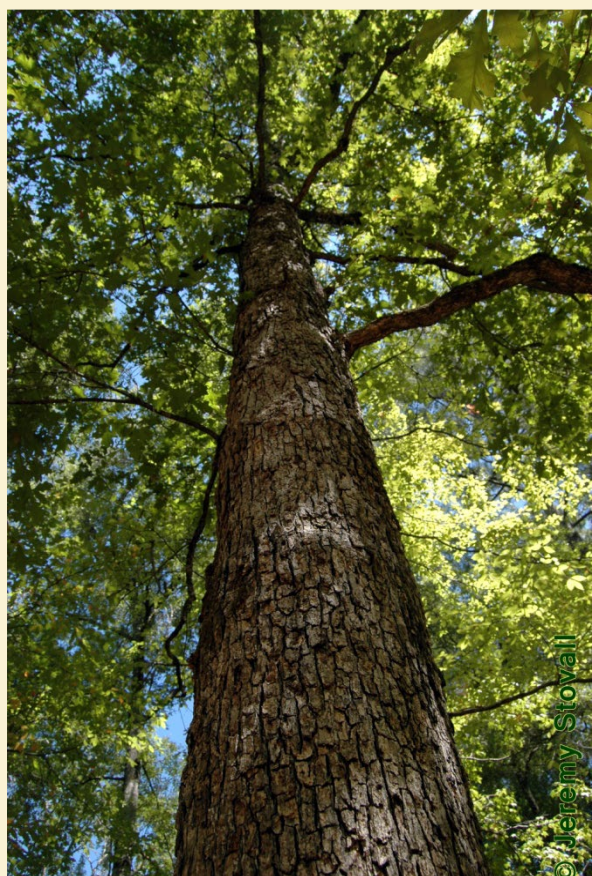
Planning for Spring Meeting

- Feb/Mar

Working Group Activities

- 2020 DFCW Workshop
- Plans to support Forest Stewards Guild/NFWF Workshops





QUESTIONS?

