

Welcome



Lower Mississippi Valley
JOINT VENTURE

*AR-LA Conservation Delivery Network RCPP Success – Now our work **Begins***

David Breithaupt

Ricky Chastain

Bill Bartush

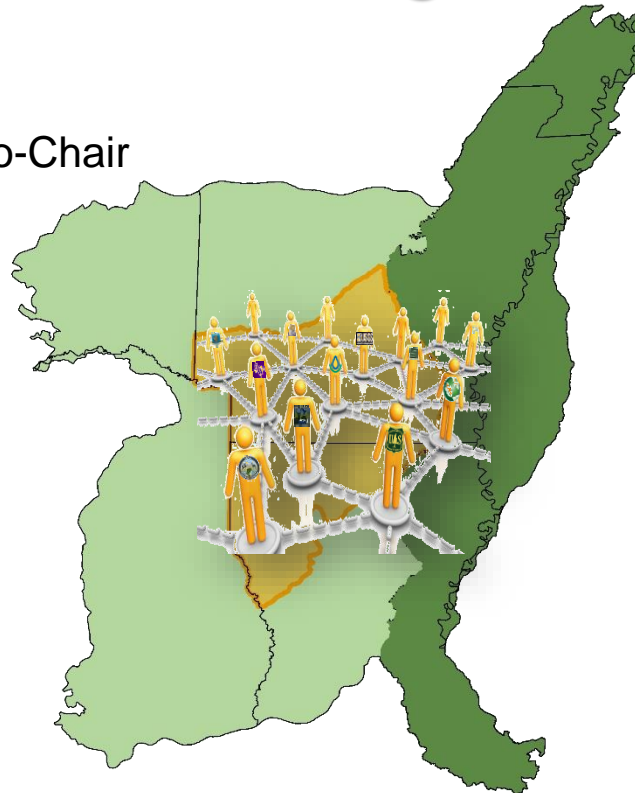


Lower Mississippi Valley

JOINT VENTURE

AR-LA Conservation Delivery Network Steering Committee

David Breithaupt, Co-Chair
Bubba Groves
Dan Weber
Jeff Fore
David Hayden
Jeremy Everitts
Ryan Diener



Ricky Chastain, Co-Chair
Jason Nolde
Darren Spinks
Bill Holimon
Pat Stinson
Rick Williams
Amanda Mathis

CDN Review

- *Steering Committee Reorganized 2019-20*
- *CDN January 2020-June 2021*
- *Private Lands - Open Pine Delivery*
- *Morehouse FFI Catalyst*
- ***AR-LA CDN - RCPP Future & Timeline***
 - ***Steering Committee Expectations***
 - ***Engaging Delivery Team***

CDN Functions



Lower Mississippi Valley
JOINT VENTURE

*Forum where agencies and organizations responsible for natural resource conservation **coordinate on-the-ground delivery** of otherwise independent efforts, **prioritizing** delivery actions that target high priorities for conservation.*

Primary Functions

1. Communication, coordination, and collaboration among delivery leaders, to include conservation organizations from within and beyond the current JV partnership.
2. Communication between planning/design and delivery.

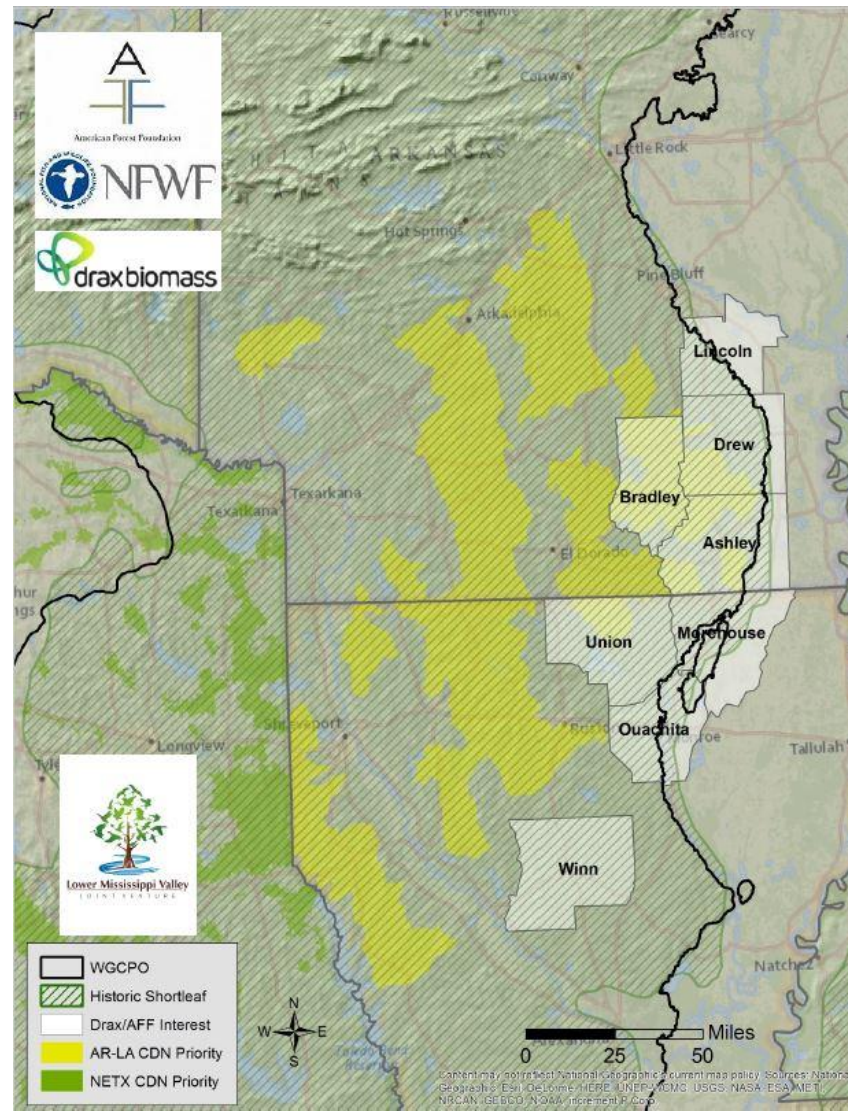
CDN Expected Outcomes



Lower Mississippi Valley
JOINT VENTURE

- ❑ **Increased communication** among delivery staff
- ❑ Capitalizing on (otherwise lost) **opportunities**
- ❑ **Unified** voice to communicate
 - ❑ Potential funders
 - ❑ Landowners
- ❑ More focused and strategic collective efforts
 - ❑ **Identification of priorities**
 - ❑ Geographic and functional focus where positive outcomes are most likely
- ❑ **Increased resources (\$\$) dedicated to conservation priorities**
- ❑ Bigger, Better, Measurable results

Morehouse Family Forest Initiative



Morehouse FFI Partnership

Set Stage for Farm Bill Opportunities

- Includes ½ of RCPP county/parishes
- AGFC/ADAF, NRCS & QF
- Backlog acres for FSI/Rx Fire



RCPP Overview



Lower Mississippi Valley
JOINT VENTURE

- **Adjusted from \$7 to \$5.9 million**
- **Contribution Match - \$9 million**
 - **Calculating & Reporting**
- **70% - Landowner financial assistance**
 - **Funds stay with NRCS**
 - **\$413k/state/yr for 5 years**



Lower Mississippi Valley
JOINT VENTURE

RCPP Principles

- **Innovation, Partnership, and Management**
- **Co-investment approach:**
 - **Impact and Partner Contribution (IVM)**
 - **Demonstrate experience working effectively with agricultural producers (MFFI)**
 - **Measurable conservation goals**

RCPP Overview



Lower Mississippi Valley
JOINT VENTURE

- Adjusted from \$7 to \$5.9 million
- Contribution Match - \$9 million
- **30% - technical assistance (\$1.7+mil)**
 - **7% NRCS** (\$408k Field Office Support)
 - **16% delivery partners** (\$950k ABC fiduciary)
 - **7% Monitor, Communicate, F&A** (ABC)
- **ALL of Us = Reporting Responsibilities**

Contributors and POC

- *Entergy - Brent Davis*
- *PotlatchDeltic - Kit Hart*
- *Enable Midstream - Connie Oslica*
- *So Central Electric Coop – Kyle Armstrong*
- *Ouachita Electric Coop- Robby Stinnett*
- *Claiborne Electric Coop – Joey White*

Over \$6 million contribution via IVM

Contributors & POC

- *AGFC - Ricky Chastain*
- *LDWF - David Breithaupt*
- *AGFR - Darren Spinks*
- *ABC - Bill Bartush*
- *ANHC - Bill Holimon*
- *Quail Forever - Ryan Diener*
- *TNC (AR & LA) - Jeff Fore & Dan Weber*
- *USFWS (Partners & JV) – Jonathan Baxter*

Steering Committee Task

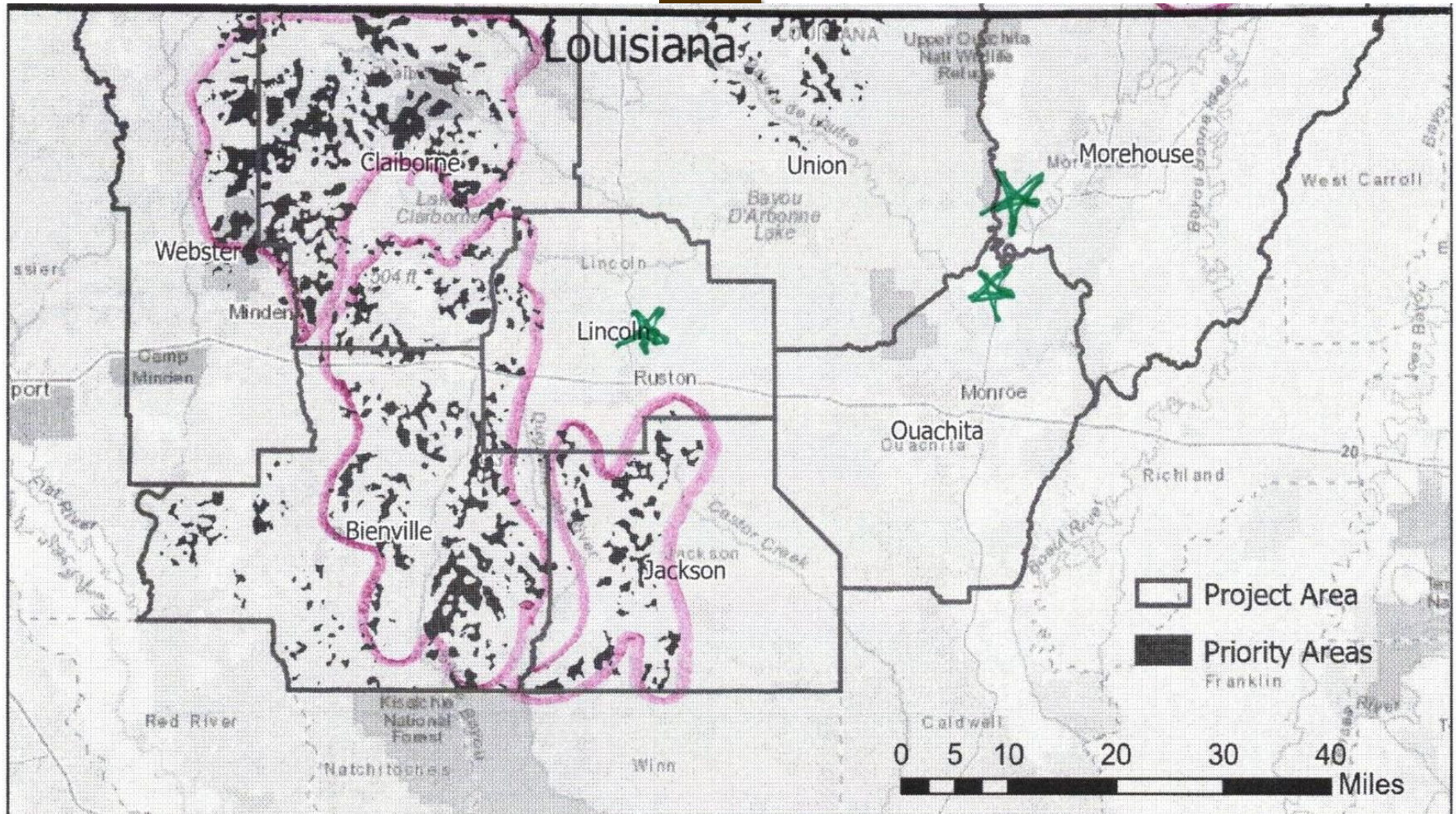
- *Activate Delivery Working Group*
- *Identify Agency/Org POC*
 - *Initiate Contribution April 26th*
 - *Accumulating contribution*
 - *Quarterly or semi-annual reporting*
 - *Develop contribution report protocol*
 - *Use RCPP standard rates, or*
 - *Agency accounting*

AR-LA CDN RCPP



Lower Mississippi Valley
JOINT VENTURE

Where will we work?

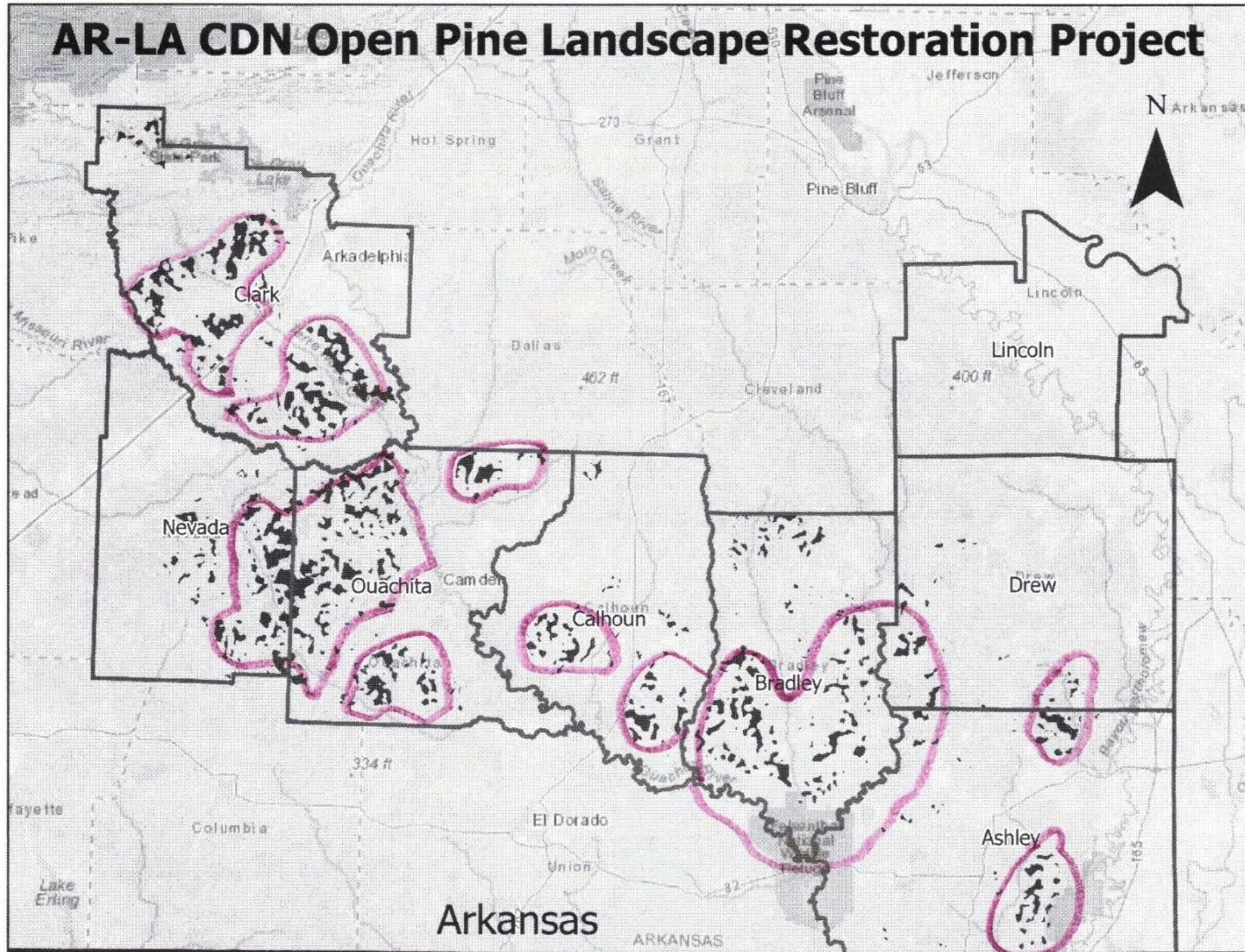


AR-LA CDN RCPP - Where



Lower Mississippi Valley

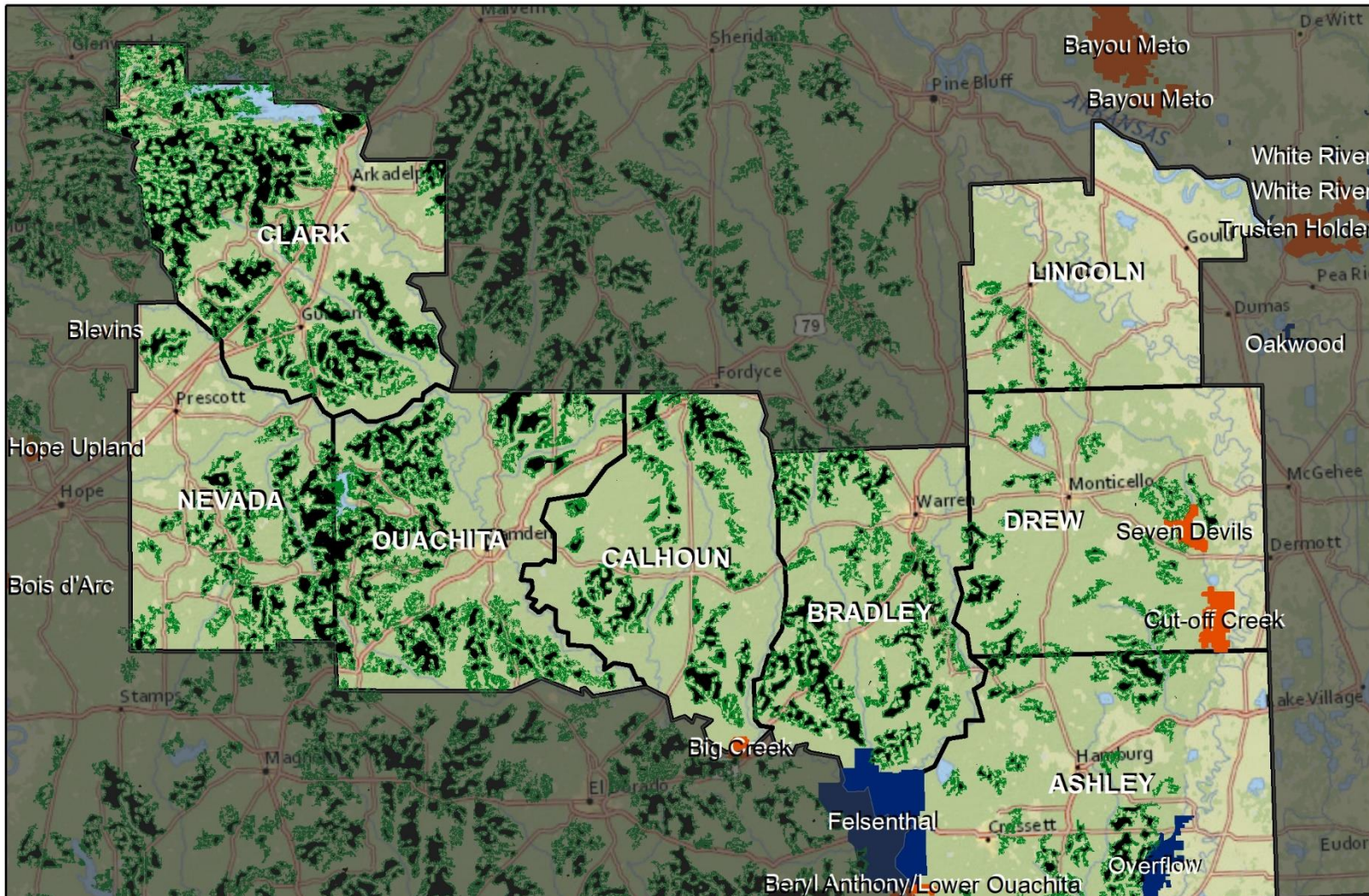
ENTURE



AR-LA CDN RCPP - Where



Lower Mississippi Valley
JOINT VENTURE

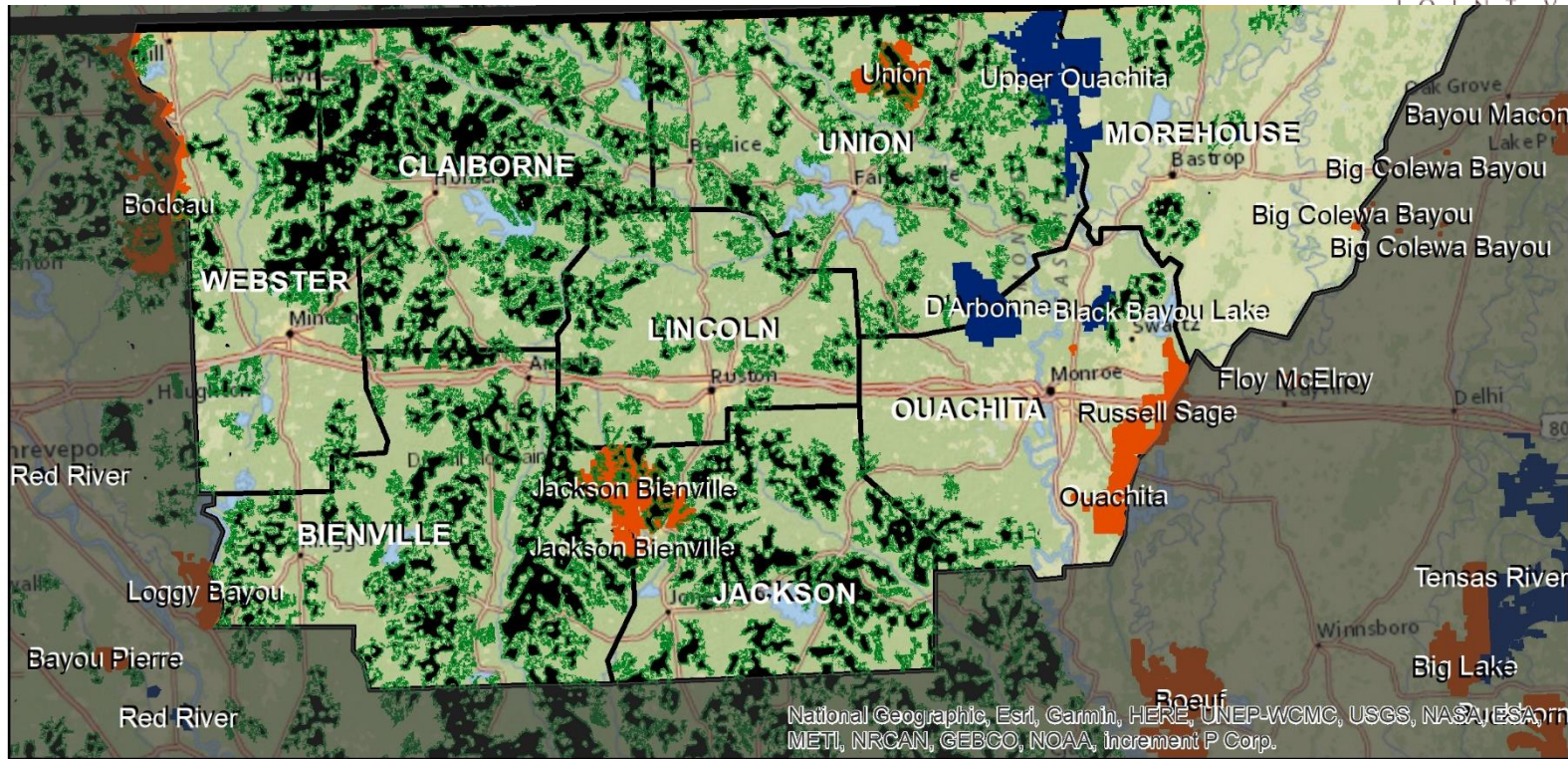


AR-LA CDN RCPP - Where

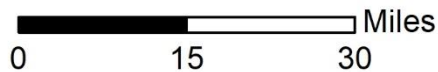


Lower Mississippi Valley

JOINT VENTURE



Arkansas-Louisiana WGCP CDN RCPP Footprint



- CDN Top 25% Priority
- WMA
- NWR



Lower Mississippi Valley
JOINT VENTURE

Delivery Working Group Task

Refine RCPP Priority Map

- *Identify Highest Priority Polygons*
 - *Delete no/low work areas*
 - *ID priority R.O.W. corridors*
 - *Conservation Estate*
- *Document Criteria to rank/refine*
- *Include Farm Bill Priorities*

Questions/Comments?

RCPP Timeline

- Steering Committee Expectations
- Engaging Delivery Team