



Lower Mississippi Valley  
JOINT VENTURE

# LMVJV Conservation Delivery Networks

*How did we get here, and*

*why does it matter?*



AR MAV CDN Webinar; 6 August 2020

Keith McKnight, LMVJV Coordinator

# Quick Preview



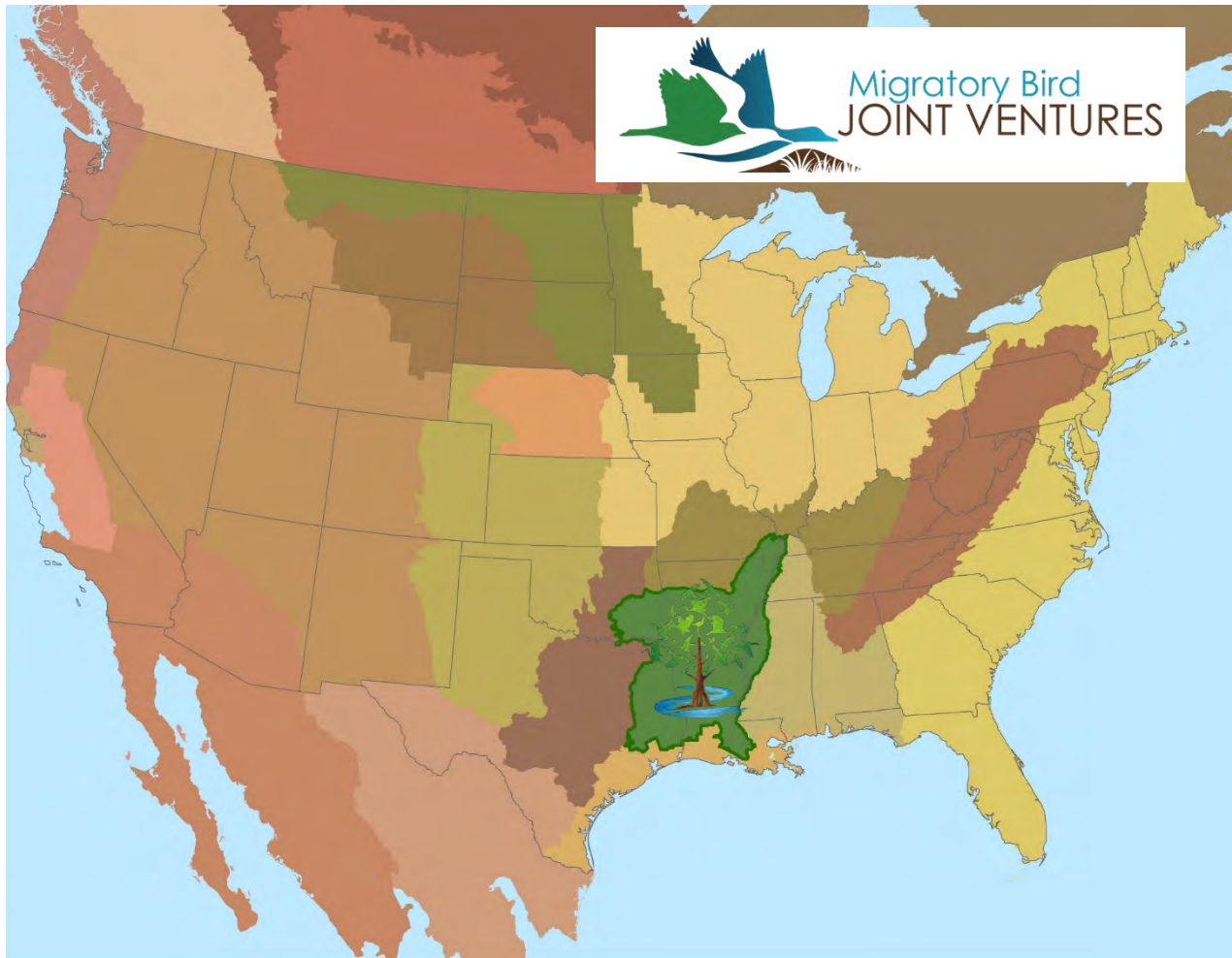
**Lower Mississippi Valley**  
JOINT VENTURE

- **LMVJV - context for creation of CDNs**
- **Basic functions, expectations, capabilities of CDNs**
- **Sampling of outcomes and achievements of CDNs**

# Lower Mississippi Valley JV



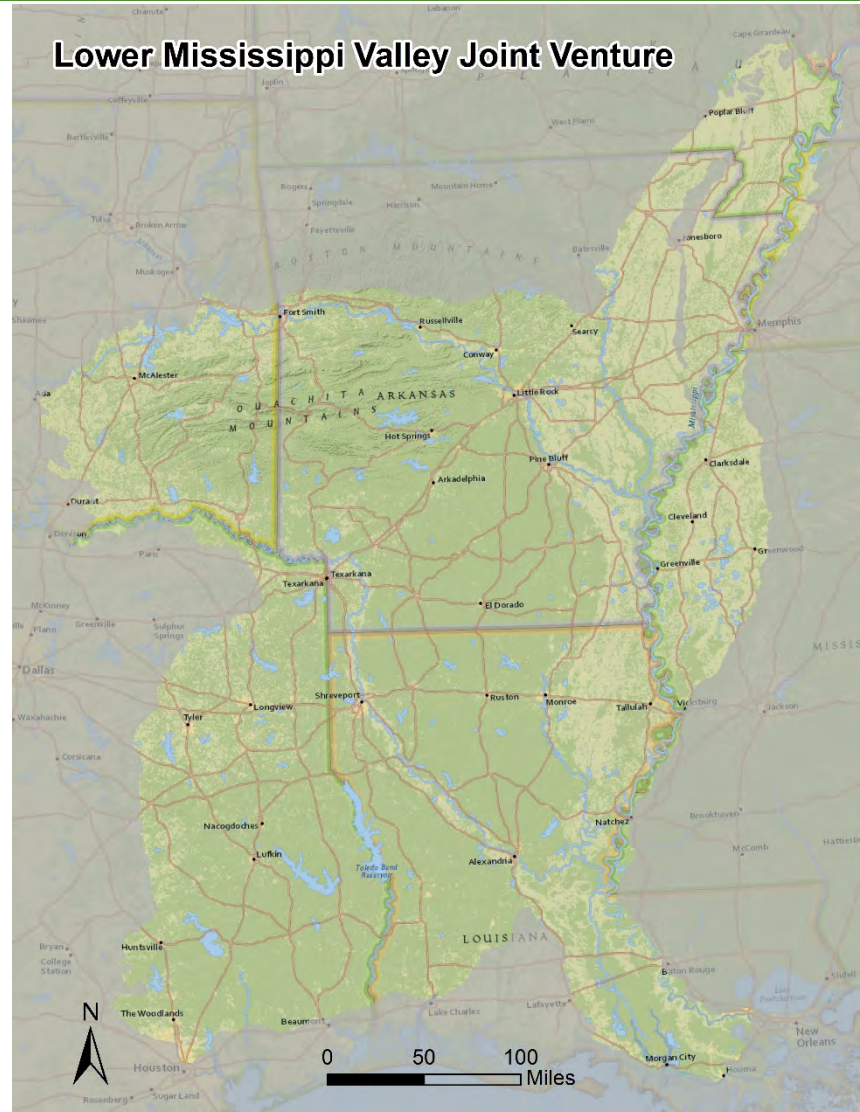
Lower Mississippi Valley  
JOINT VENTURE



# Lower Mississippi Valley JV



Lower Mississippi Valley  
JOINT VENTURE



# Lower Mississippi Valley JV



Lower Mississippi Valley  
JOINT VENTURE

## Who is the “JV” anyway??!!

M  
A  
N  
A  
G  
E  
R  
E  
M  
E  
N  
T

B  
O  
A  
R  
D



O  
F  
F  
I  
C  
E

S  
T  
A  
F  
F



P  
A  
R  
T  
N  
E  
R  
S



# Lower Mississippi Valley JV



Lower Mississippi Valley  
JOINT VENTURE

## Why does this matter?



# Lower Mississippi Valley JV



Lower Mississippi Valley  
JOINT VENTURE

## Migratory Bird Joint Venture

Provides effective means of convening, supporting, & maximizing

# PARTNERSHIP

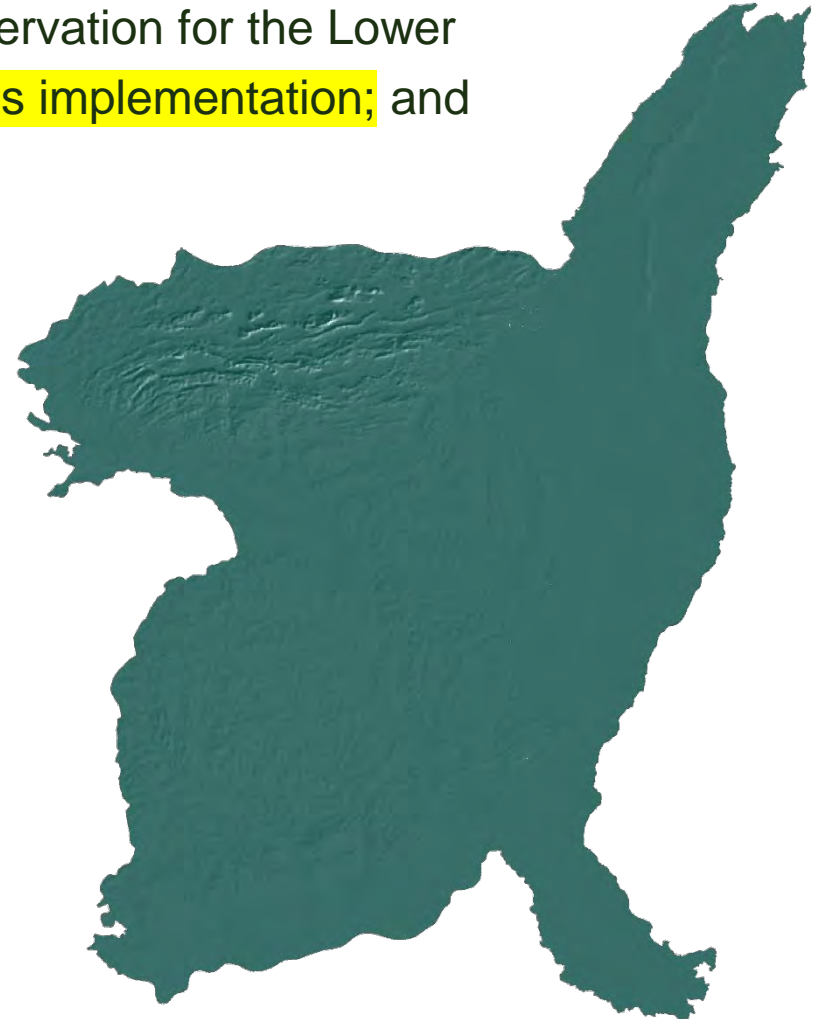
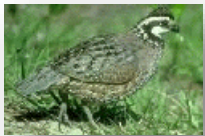


# Lower Mississippi Valley JV



Lower Mississippi Valley  
JOINT VENTURE

...developing a **shared vision** of bird conservation for the Lower Mississippi Valley region; **cooperating in its implementation**; and collaborating in its refinement



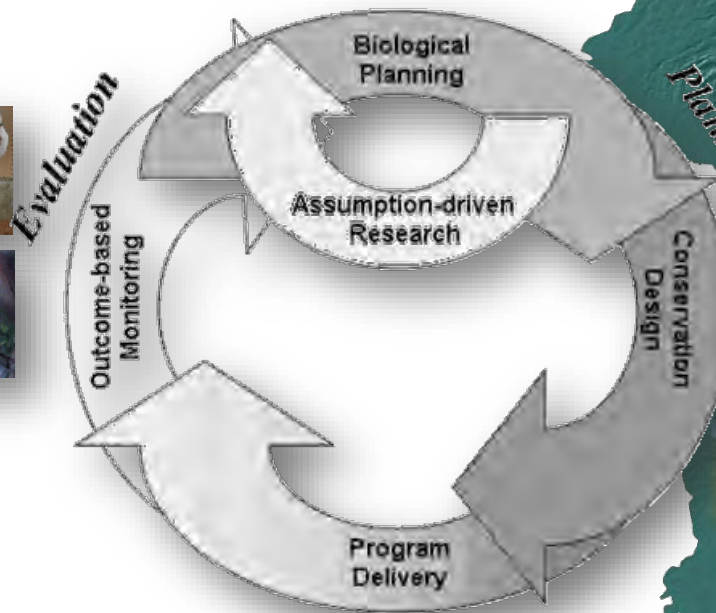
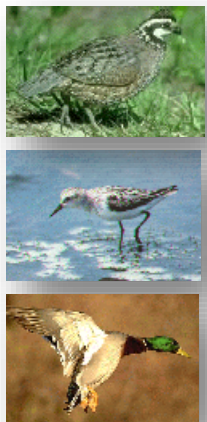


# Strategic Habitat Conservation



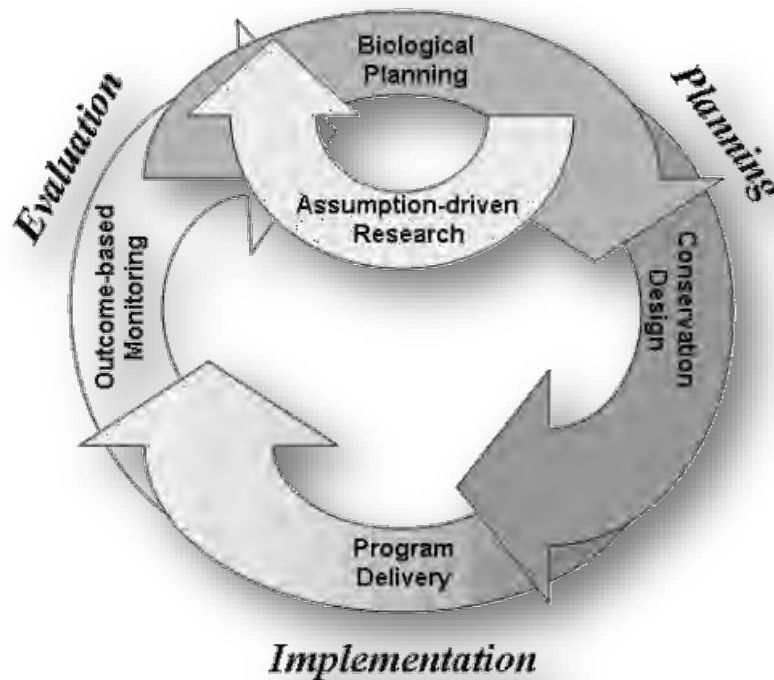
Lower Mississippi Valley  
JOINT VENTURE

A tangible, functional process of developing and refining a conservation strategy, for making more efficient and effective management decisions...



# Strategic Habitat Conservation

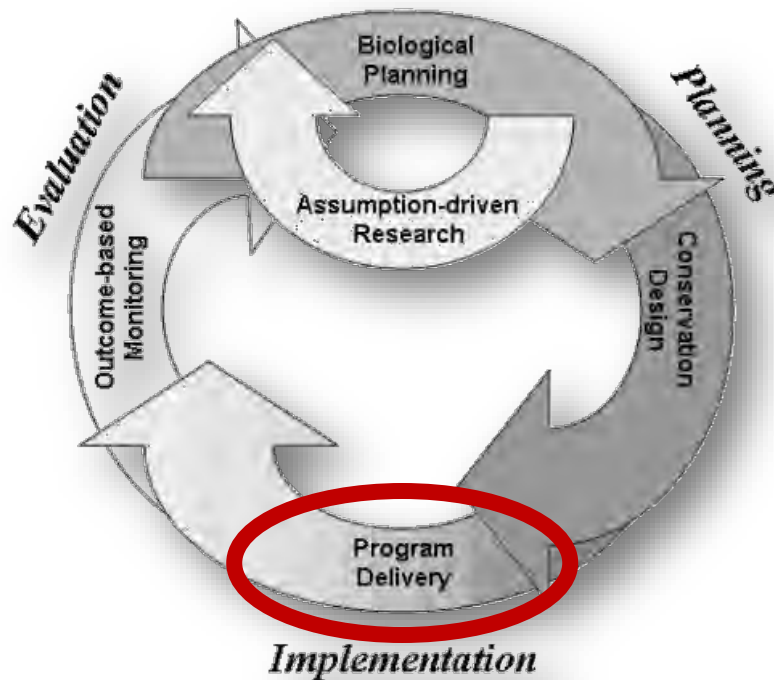
**STRATEGIC** conservation can be truly realized only when each component is functional and connected to all other components



# Strategic Habitat Conservation

STRATEGIC conservation can be truly realized only when each component is functional and interrelated to all other components

In the end, only one of these five functional elements is the target

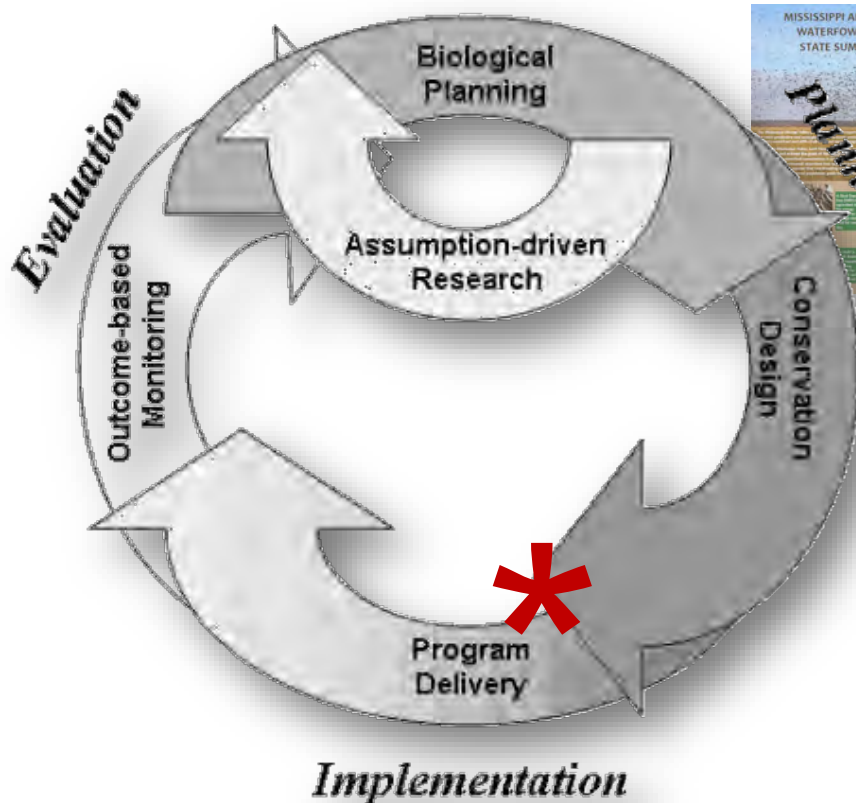


# LMVJV Implementation



Lower Mississippi Valley  
JOINT VENTURE

## Fundamental, Critical Assumptions



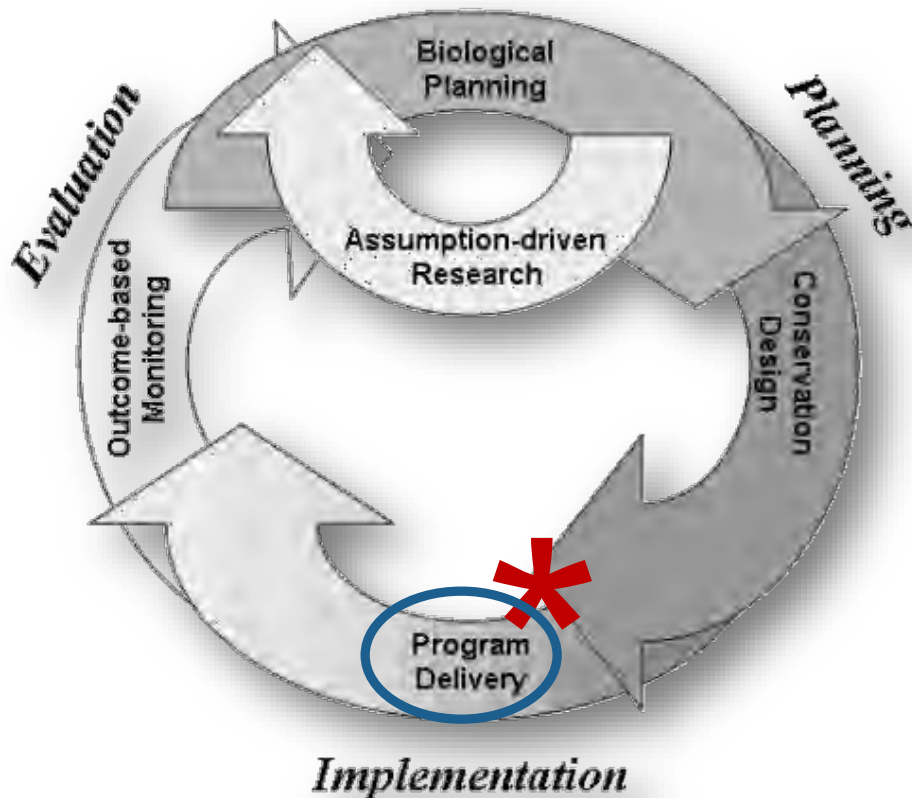
- Planning/Design inform delivery

# LMVJV Implementation



Lower Mississippi Valley  
JOINT VENTURE

## Fundamental, Critical Assumptions



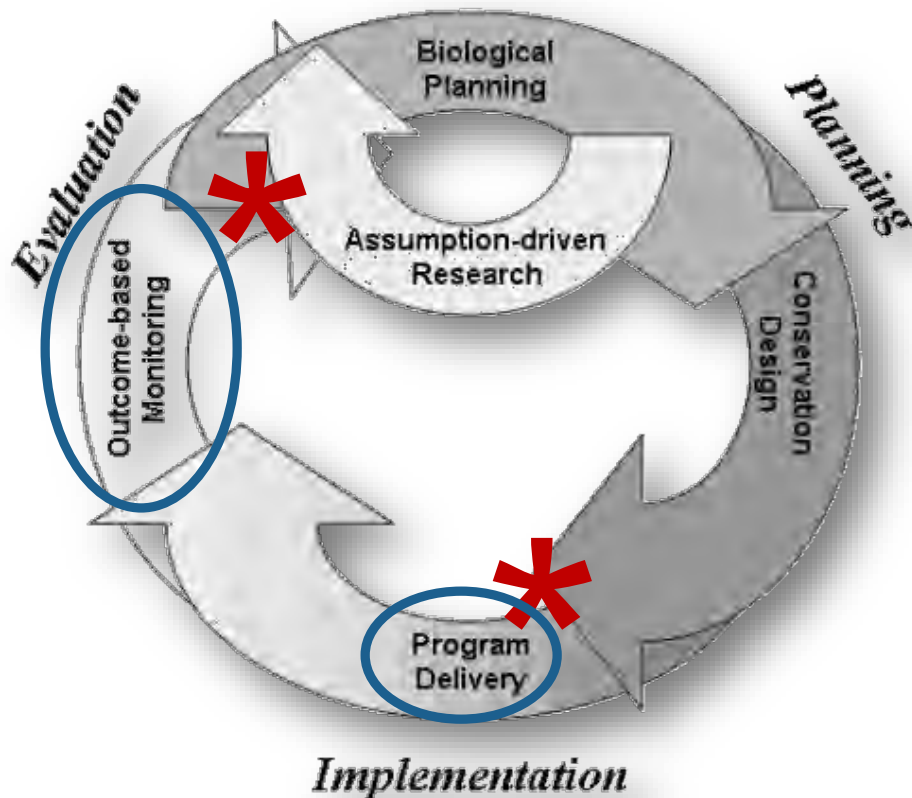
- Planning/Design inform delivery
- Delivery is coordinated and optimally effective

# LMVJV Implementation



Lower Mississippi Valley  
JOINT VENTURE

## Fundamental, Critical Assumptions



- Planning/Design inform delivery
- Delivery is coordinated and optimally effective
- Delivery outcomes inform future planning



## Relevant Plans & Designs

Bottomland Hardwood/Riparian  
West Gulf Coastal Plain

Lower Mississippi Valley Joint Venture  
SHOREBIRD PLAN SUMMARY 2019

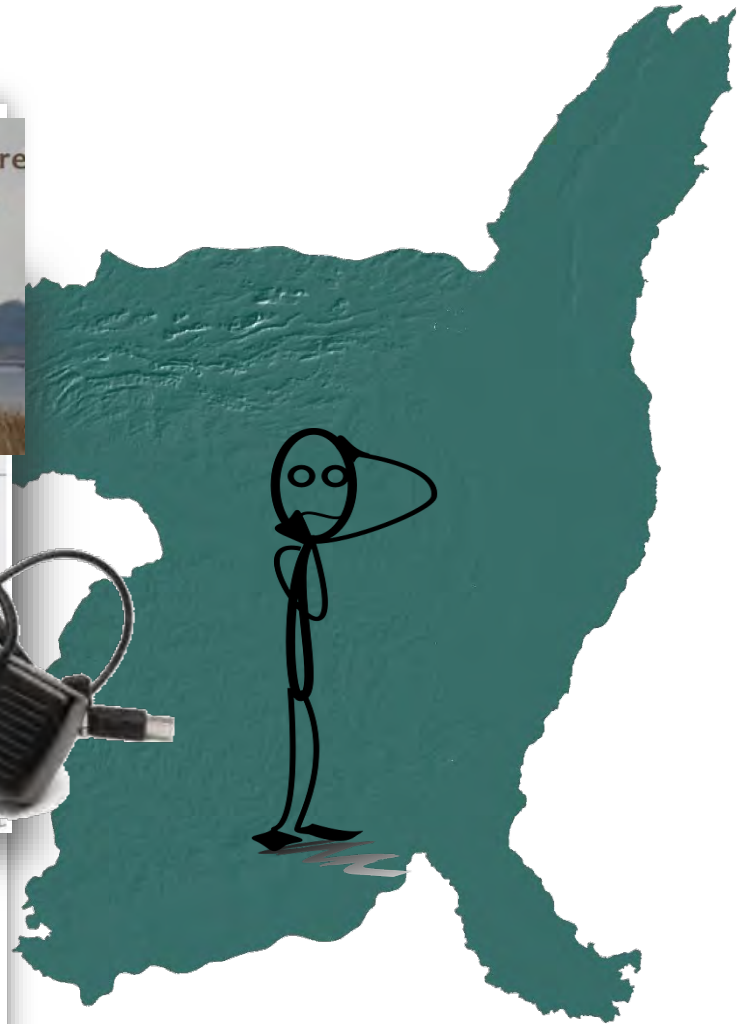
Click Here to Download

Table 1. Allocation  
Dabbler DDD Target

MISSISSIPPI ALLU  
WATERFOWL  
STATE SUMMARIES

The Mississippi Alluvial Valley is the most productive and ecologically rich forested wetland systems on earth, nearly 100 million acres in size. The Lower Mississippi Valley populations and achieve the primary role in waterfowl conservation down continental United States. Because we assume that model to translate regional population into habitat-based goals measured in "Duck Energy Days" (DED).

The 2015 MAV Waterfowl Staging...  
A Duck Energy Day (DED) is...  
The MAV is North America's...  
October 2011





## Relevant Plans & Designs – Made More Useful

**Bottomland Hardwood/Riparia  
West Gulf Coastal Plain**



Table 1. Allocation  
Dabbler DDD Target



**MISSISSIPPI ALLUVIAL VALLEY  
WATERFOWL STEPDOWN  
STATE SUMMARIES 2015**



The Mississippi Alluvial Valley is among the most important regions for waterfowl in North America. Boasting one of the most productive and ecologically rich forested wetland ecosystems on earth, nearly 40% of the Mississippi River's watershed and 60% of all U.S. land species migrates through or winter in the water to become the MAV.

The Lower Mississippi Valley Joint Venture (LMVJV) is one of the first joint ventures formed to support waterfowl populations and achieve the goals of the North American Waterfowl Management Plan (NAWMP). The LMVJV's primary role is waterfowl conservation in protection of non-breeding habitat. Hence, this joint venture's partners have stepped down conventional objectives into regional population objectives based on historic land distributions in wet water. Because we assume that non-breeding waterfowl are primarily food limited, the LMVJV uses an energy-based model to translate regional population goals into habitat-based goals measured in "Duck Energy Days" (DEDs).

**A Duck Energy Day (DED) is equivalent to the energy needed to permit one duck for one day.**

The 2015 MAV Waterfowl Stepdown State Summaries document sets duck foraging habitat targets, broken down by state, as a means of providing guidance on decisions regarding acquisition, maintenance and/or improvement of management practices to meet habitat objectives in support of the NAWMP.

The MAV consists of portions of six states (AR, KY, LA, MO, MS, and TN), each with a DED goal based on the difference between energy demand (of the target NAWMP waterfowl wintering population) and energy supply (calculated using bioenergetic models that estimate energy per acre of the existing land base). The model indicates that the MAV is below its NAWMP objective for duck energy days.

Based on the most recently available satellite imagery and public land data, the bioenergetics model indicates that KY and MO are meeting their goals, whereas AR, LA, MS, and TN are below their goals.

(More detailed information is also available on the LMVJV Waterfowl Conservation Planning page at [www.lmvjv.org](http://www.lmvjv.org).)



Lower Mississippi Valley Joint Venture  
**SHOREBIRD PLAN SUMMARY 2019**

**Click Here to  
Load**



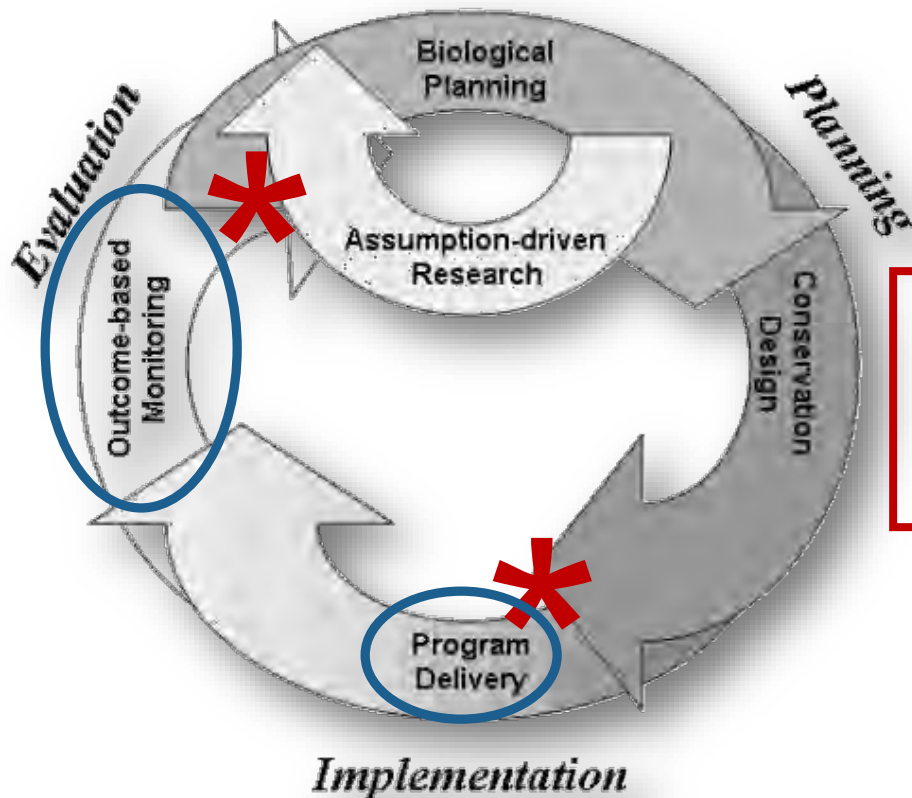


# LMVJV Implementation



Lower Mississippi Valley  
JOINT VENTURE

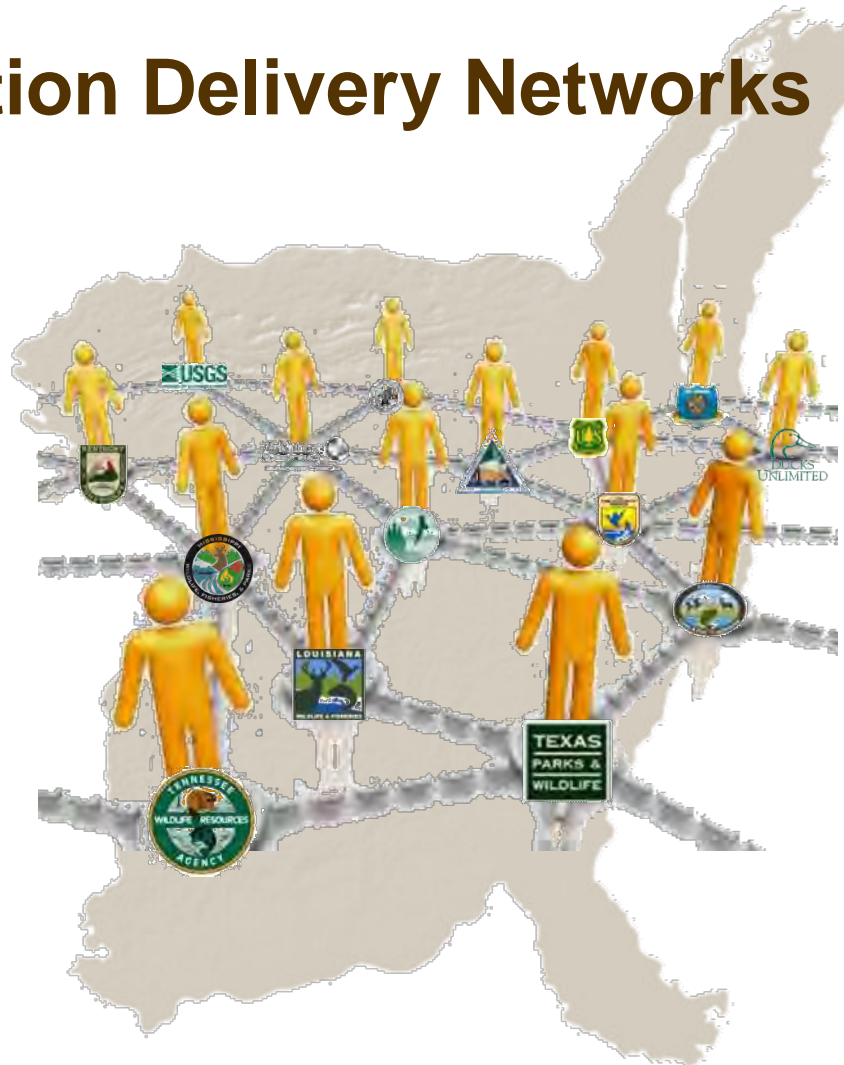
## Fundamental, Critical Assumptions



Management Board realized that this was not functioning as well as it could



## Conservation Delivery Networks



# CDN Functions



Lower Mississippi Valley  
JOINT VENTURE

*Forum where agencies and organizations responsible for natural resource conservation **coordinate on-the-ground delivery** of otherwise independent efforts, **prioritizing** delivery actions that target high priorities for conservation.*

## Primary Functions

1. Communication, coordination, and collaboration among delivery leaders, to include conservation organizations from within and beyond the current JV partnership.
2. Communication between planning/design and delivery

# CDN Key Elements



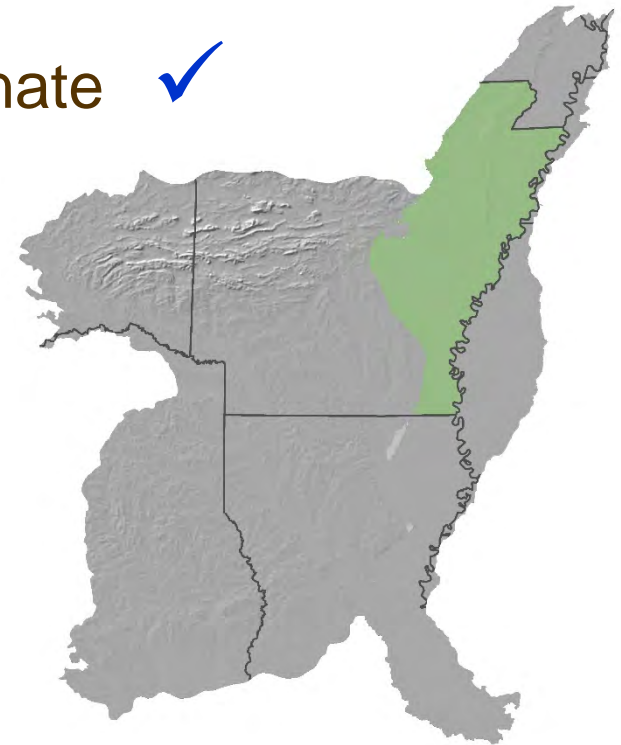
Lower Mississippi Valley  
JOINT VENTURE

## Key Elements to Support Those Functions

1. Partner Leadership ✓
2. Dedicated JV Office Staff to coordinate ✓
3. Composition of the group

**David Graves**

**Steve Brock**



# CDN Key Elements



Lower Mississippi Valley  
JOINT VENTURE

## Key Attributes of THE GROUP

1. Share very similar resource challenges & opportunities
2. Physically meeting is feasible
3. Actual individuals responsible for delivery (not “representation”)
4. Take responsibility for the outcomes of the CDN (empowered to choose your course!)



# CDN Expected Outcomes



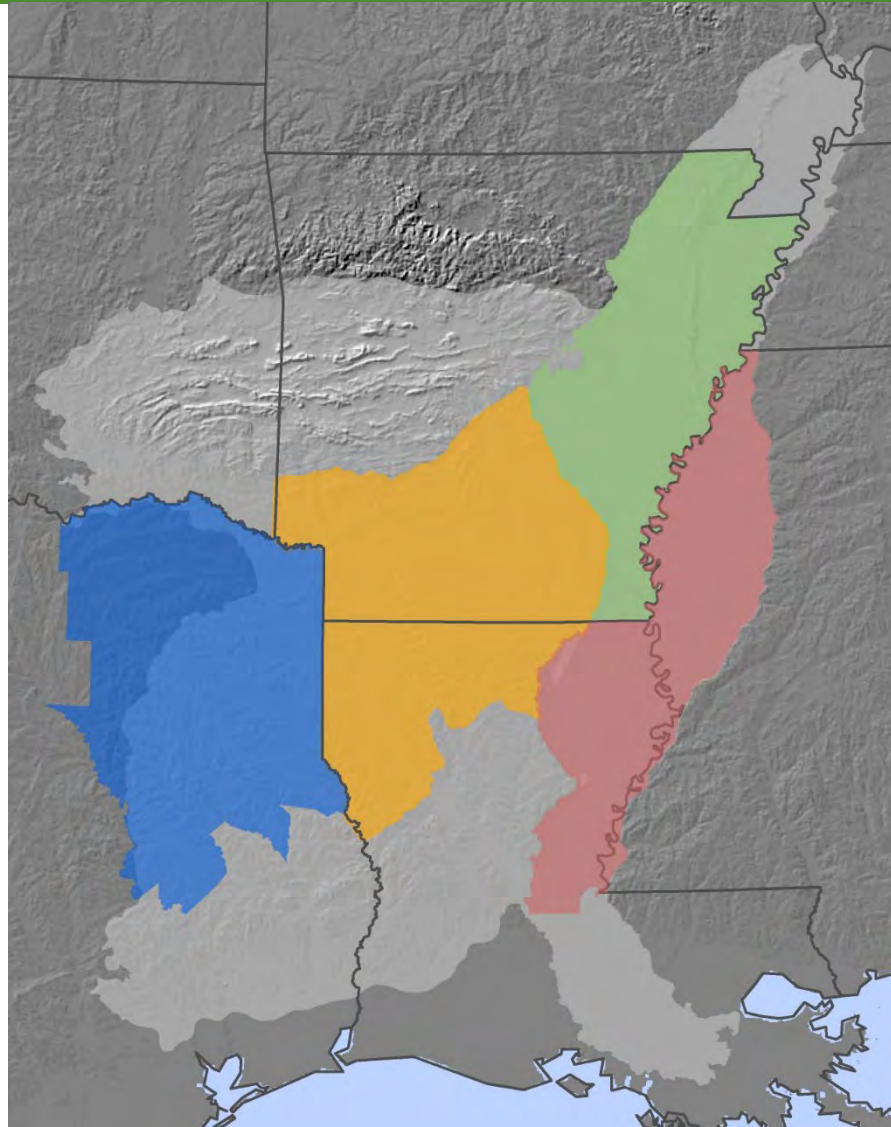
Lower Mississippi Valley  
JOINT VENTURE

- ❑ Increased communication among delivery staff
- ❑ Capitalize on (otherwise lost) opportunities
- ❑ Unified voice to:
  - ❑ Potential funders
  - ❑ Landowners
- ❑ More focused and strategic collective efforts
  - ❑ Identification of priorities
  - ❑ Geographic & functional focus where positive outcomes are most likely
- ❑ Increased resources (\$\$) dedicated to conservation priorities
- ❑ Bigger, Better, Measurable results

# CDNs Today



Lower Mississippi Valley  
JOINT VENTURE



# CDNs in Action



**Lower Mississippi Valley**  
JOINT VENTURE



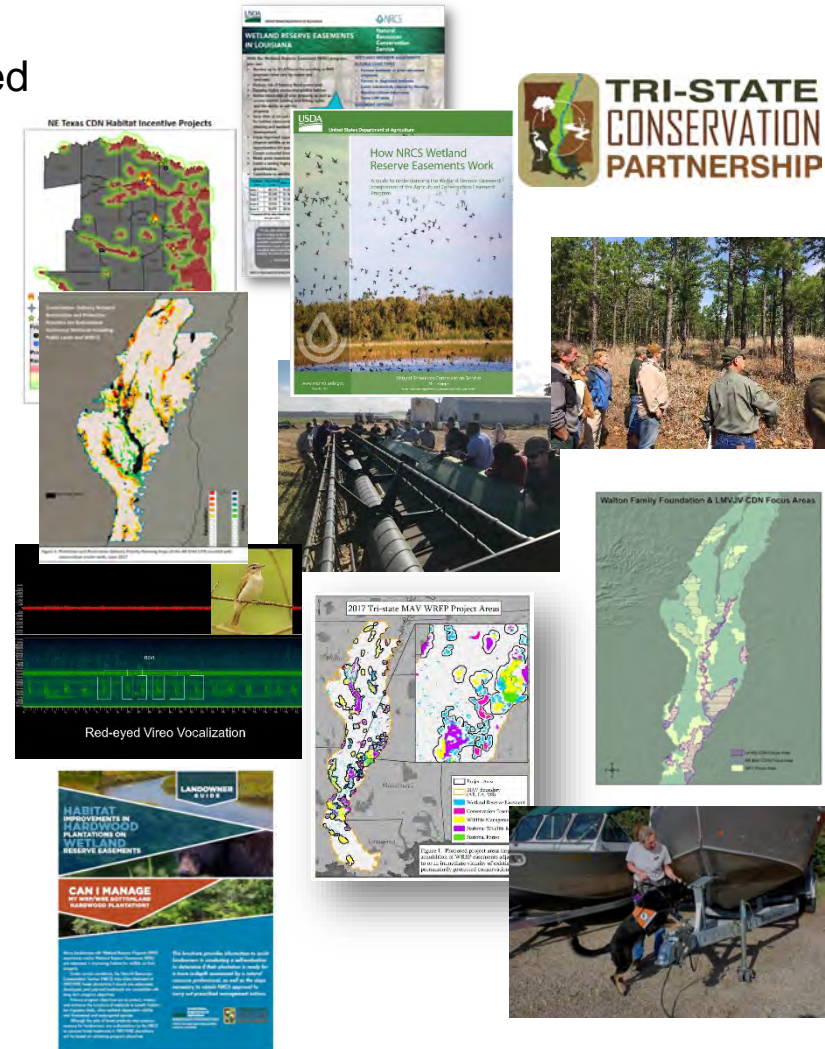


# CDN Actions



Lower Mississippi Valley  
JOINT VENTURE

- ❑ Turn-row Credibility Workshops
- ❑ Leverage private foundation support for increased capacity to deliver wetland conservation
- ❑ Invasive species awareness via working dogs
- ❑ 10,000ac / \$10MM WREP
- ❑ Pre-figure and support an entirely new tri-state partnership
- ❑ Administer private lands conservation program
- ❑ Partner with NRCS to promote and deliver WRE
- ❑ Develop forest management guidelines for managers & landowners
- ❑ Advance Shortleaf Pine Restoration & Management
- ❑ Effects monitoring of priority bird response to focused private lands work
- ❑ CDN-specific geographic & functional priorities

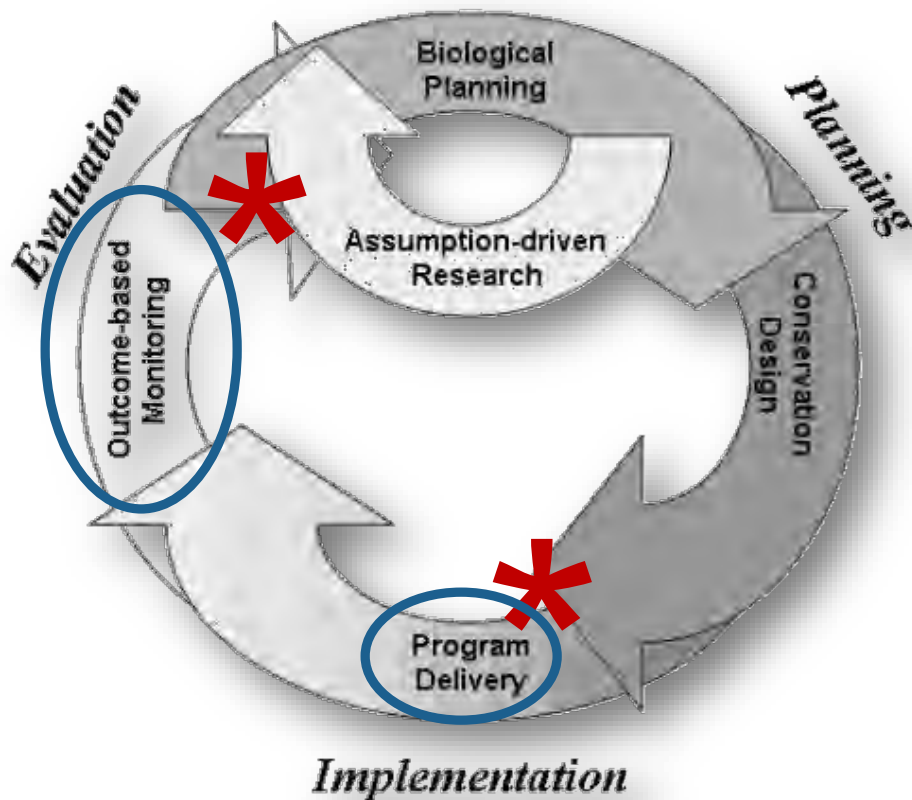


# Lower Mississippi Valley JV



Lower Mississippi Valley  
JOINT VENTURE

...developing a **shared vision** of bird conservation for the Lower Mississippi Valley region; **cooperating in its implementation**; and collaborating in its refinement



# Questions/Comments?

